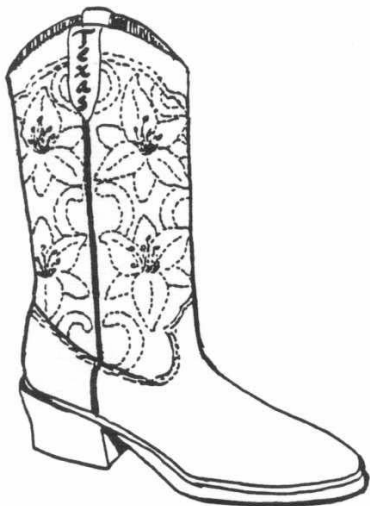
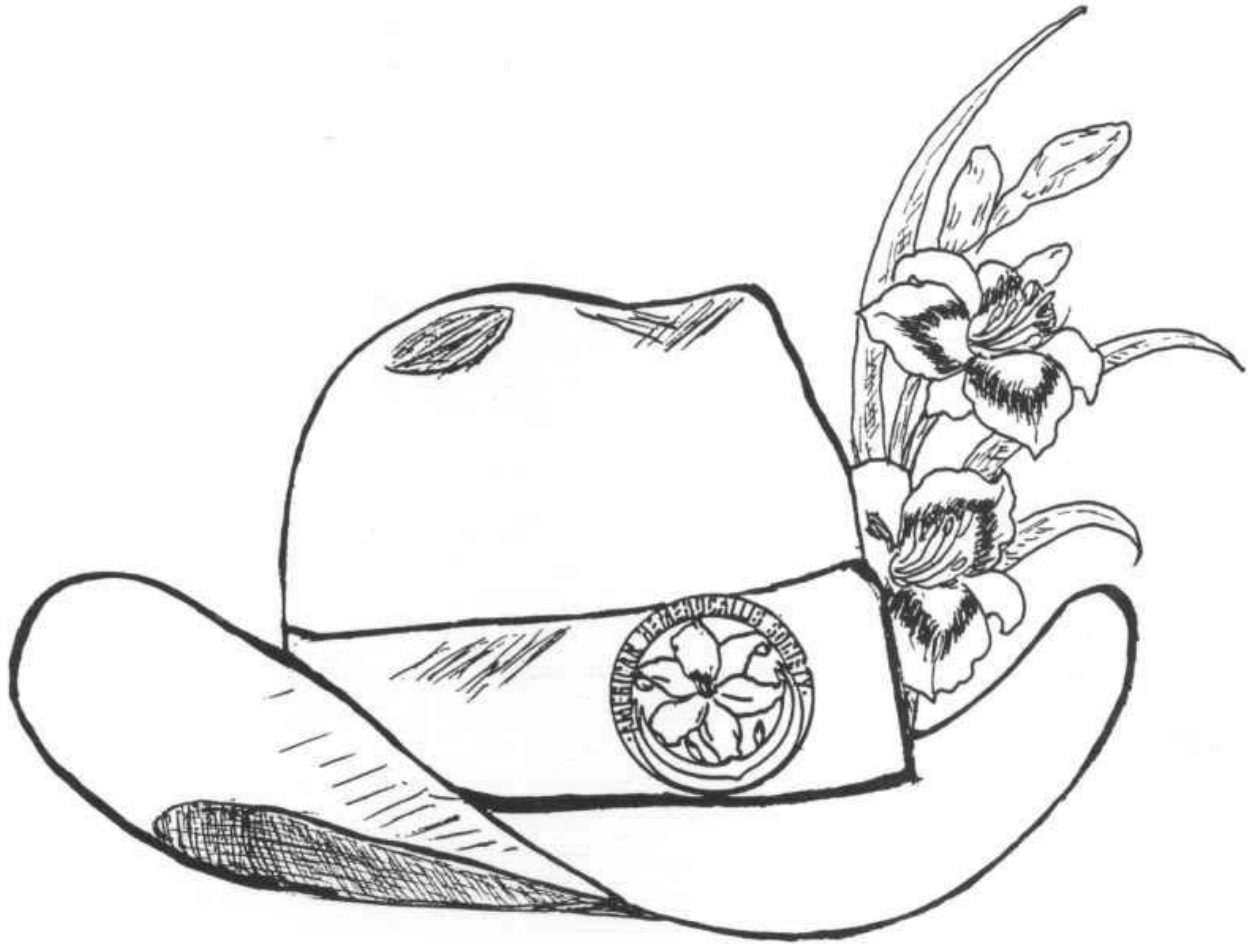
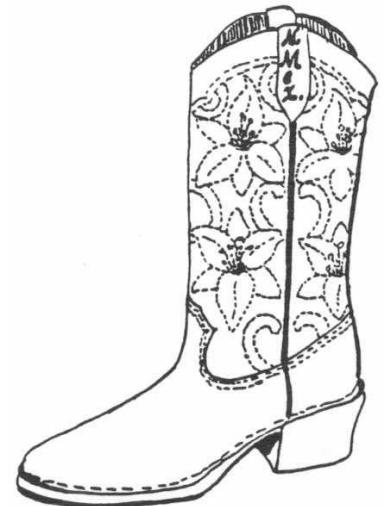


Region 6 Daylily Newsletter

Member of the American Hemerocallis Society



Fall-Winter 1986



AMERICAN HEMEROCALLIS SOCIETY

President: Miss Selma Timmons

1306 Laura Avenue

Warner Robins, GA 31093

REGION 6 VICE PRESIDENT

Nell Crandall
721 Ourlane Circle
Houston, TX 77024
Ph. (713) 465-6742

SECRETARY

JoAnn Park
127 Tulip Trail
Lake Jackson, TX 77566
Ph. (409) 297-8985

MEMBERSHIP CHAIRMAN

Logan Pillow
7150 Santa Fe
Houston, TX 77061
Ph. (713) 644-3521

REGION 6 PUBLICITY DIRECTOR

Betty Roberts
8615 La Sala Grande NE
Albuquerque, NM 87111
Ph. (505) 298-1294

TREASURER

Gene K. Koonce
447 Crestover Circle
Richardson, TX 75080
Ph. (214) 231-3516

AWARDS & HONORS CHAIRMAN

Rodger Croker
904 E. Wallace
Llano, TX 78643

YOUTH DIRECTOR

Lisa Mutz
3014 Vollmer
Houston, TX 77092
Ph. (713) 682-6642

REGION 6 ARTIST

Rena Humphreys
602 E. Wilkins
Angleton, TX 77515
Ph. (409) 849-6303

PUZZLE CHAIRMAN

Gene Orgeron
217 Mockingbird Lane
Port Arthur, TX 77642
Ph. (409) 982-8707

AREA REPORTERS

Jo Crisp
3304 Edgefield Drive
Pasadena, TX 77503

Elizabeth Krebs
1705 Cecelia
Taylor, TX 76574

Cora Offer
237 E. Summit
San Antonio, TX 78212

Ray Houston
413 Forest Oaks Lane
Lake Jackson, TX 77566

Gertrude Lanham
9906 Angora
Dallas, TX 75218

Betty Roberts
8615 La Sala Grande, NE
Albuquerque, NM 87111

Delores Jones
Route 7, Box 1300
Nacogdoches, TX 75961

Marie Marburger
Route 1, Box 141
Sinton, TX 78387

Edythe Weeks
Route 2, Box 144
Diboll, TX 75941

Margaret Jones
2040 Woodrow
Port Arthur, TX 77642

Louise Oliver
416 Lantana Lane
Pleasanton, TX 78064

DEADLINES

For Spring Newsletter
February 15

For Summer Newsletter
July 1

For Winter Newsletter
October 15

COVER:

Rena Humphreys
and
Nell Crandall

DONATIONS to the

NEWSLETTER FUND are
gladly accepted. I suggest
\$5.00, since that almost covers
the cost. Checks should be
made to Region 6 Newsletter

ADVERTISING RATES

1/4 page	\$8.00
1/2 page	12.00
Full page	20.00
Mini	2.00

All interested persons are invited to join the AMERICAN HEMEROCALLIS SOCIETY. All memberships are on the calendar year - January-December. Individual dues are \$12.50 per year. A subscription to THE DAYLILY JOURNAL is included with each membership. Make all checks payable to AHS and send to Eleanor C. Launius, 1454 Rebel Drive, Jackson, MS 39211.

MESSAGE FROM YOUR RVP AND EDITOR
By Nell Crandall

How many of you worked the puzzle in the Summer Newsletter? How many of you had trouble with No. 7? I never even had the slightest clue to No. 7, and I think it must have given more people trouble than any of the others. Also I guessed EBONY CIRCLE for No. 3 and TWOBYTWO for No. 16, both which were different from the answers given by our Puzzle Chairman. The puzzle answers are included in this issue.

There is no puzzle in this issue and no club news. We will catch up in Spring 1987.

I am printing the information about the 1987 Region 6 Meeting in Brazosport so you will know in plenty of time to make your plans. The people who are hosting the Regional would like early, early registrations so they will know how many to plan for. And all YOUTHS, take notice! If you pre-register, you can come to the Regional and join in the companionship absolutely FREE! Do come!

Since many of you will want to go to the Region 13 Meeting in Sulphur, Louisiana, I have printed the schedule for it, also.

I broke my arm on August 21, and that set my schedule back somewhat as far as planting is concerned, but I do have my "Guest Bed" ready for the 1988 National Convention, and so far have 65 guest plants in it, plus 14 guest "spiders" in another Guest Bed. I had to laugh the other day when I told a friend that I was working to get my Guest Bed ready for 1988. She thought I was having company, and had to clean house and get the bed ready for my company to stay overnight. She wondered why I was starting to get it ready so early since they weren't coming until 1988.

Many thanks for your cards and letters after I broke my arm. If I did not answer, it was because I am terribly right-handed and can't write or do much else with my left hand. And then when I got well enough to type and write, I was so far behind with getting the Newsletter out and the daylilies transplanted, etc. - well, I just didn't get to thank everyone personally.

I hope you will enjoy reading about the Region 6 Hybridizers as much as I did. You may wonder why Betty and Edgar Brown are not included. The reason is that Bobo Faggard is writing a feature article on the Browns' hybridizing program which will be printed in the Spring 1987 Newsletter.

You will notice that AHS has a new secretary replacing Ainie Busse, who took the job last year strictly on an interim basis. "Elly" Launius will take over on December 1, 1986. Her address is listed on the inside front cover. AHS dues should be sent to her.

At the beginning of 1987, it will be time again for you to send me your contributions to the Newsletter fund for next year. I have suggested \$5.00. I am always glad to have your notes and checks. I feel that each one is a vote of confidence for our Newsletter.

Very best wishes for HAPPY HOLIDAYS and good growing in 1987!

A MESSAGE FROM YOUR RPD
By Betty Roberts

Congratulations to Peggy Hammel for being featured in the August issue of the Dallas-Fort Worth "Home and Garden" magazine. "Dazzling Daylilies: A Mid-Cities Garden," was the cover title and "Day Bloomers" the feature article title. What a beautiful 4-page color spread this was and a marvelous bit of publicity for our first love! Peggy is an excellent grower and judge and always bubbles over when given an opportunity to discuss her favorite flower. Keep spreading the good word, Peggy!!

I know there are others in Region 6 who make the news. Please send me a copy of your newspaper publicity whenever you do, as I would like to start a file for future RPDs. ANY publicity would be welcome, be it shows, plant sales, culture, or activities.

And speaking of publicity - in planning ahead, I'm sure there will be an announcement of flower show dates in the Journal. In order for me to have this information for both the Regional and National publications, please supply the following information as soon as it is available.

Name of Society
City
Date of Show
Place of Show
Time of Show
Society President and Telephone Number
Show Chairman and Telephone Number

AHS membership figures are out for 1986, and we need to reset goals for 1987. In 1985, Region 6 led the membership parade with a total of 484 members. Region 2 (Illinois, Idaho, Michigan, Ohio, Wisconsin) was a close second with 479, and Region 3 (Delaware, Washington D.C., Maryland, New Jersey, Pennsylvania, Virginia, West Virginia) was third with 448. The 1986 figures show Region 2 with 584 members, Region 3 with 532, and Region 6 with 525. SO-O-O, let's rise to the challenge, Region 6, and aim for 600 members in 1987. I've seen your enthusiasm and KNOW you can impart this enthusiasm to 75 additional members.

The GOOD NEWS: AHS membership now stands at 5,083, up from 4,528 in 1985, and topping the 5,000 figure for the first time.

THANK YOU ALL, for helping to make my 1986 a more exciting one!

**REGION 6 MEMBERS ATTENDING 1986 AHS CONVENTION
ATLANTA, GEORGIA**

Carleta Arrant
Bill Ater
Mary Anne Ater
Bea Austin

Dana Jackson
Delores Jones
Margaret M. Jones
Velma Jordan

Jeri Baker
Jean Barnhart

Margaret Lege
Patsy Lee Lepper
Joyce W. Lewis

Elizabeth Cahoon
Frances Choate
Nell Crandall

Ann Marks
Dinah Martin

Mollie Eddlemon
Emily Everett
W. D. Everett
Archie Ewing
Leora Ewing

Mable Nelson

Shy Osborn
Charlyene Owen

Anne Faggard
Bobo Faggard
Bertie Ferris

Nell Pittman

Betty Roberts
Ned Roberts

Eddie W. Gage
Mary Gage
Anna Rosa Glidden

Mickey Sanders
Mildred Schlumpf
Allie Swafford

Peggy Hammel
Kenneth Henson
Virginia Henson
Shirley E. Hill

Inez Tarrant
Pat Thornton

Lucille Warner
Jay E. Warner

Winner of the President's Cup: FAIRY TALE PINK
Hybridized by Charlie Pierce, Mobile, Alabama

Winner of the Florida Sunshine Cup: YELLOW LOLLIPOP
Hybridized by Clarence Crochet, Prairieville, Louisiana

Charlie Pierce died during the Atlanta Convention

THE HUTCHINS GARDEN
By Patsy Lepper, Brazoria, Texas

The garden of Mary Lou and Ralph Hutchins has many well grown and beautiful daylilies, so it is a pleasure to share the top five from my list of many.

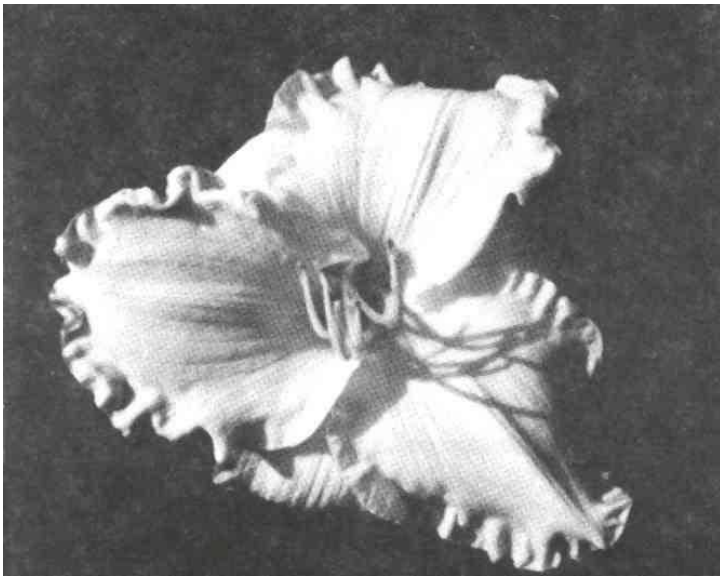
FAIRY TALE PINK (Pierce) 5 ½" superb pink ruffled flower with a green throat and heavy substance.

CREATIVE ART (Pierce) 6" beautiful deep ruffled large cream yellow with overlapping petals and sepals and a small green throat.

TANI (Pierce) 6" flower of light rose pink with deeper veining. Petals and sepals are wide and very ruffled. It has a dark green throat and very thick substance.

SURPRISINGLY PINK (Pierce) 6" pale pink flower with darker ribbing. Petals are wide with deeper pink edging; very ruffled with a green throat.

LILTING LAVENDER (Childs) 8" lavender self with a light green throat. The large flowers have 2 ¼" ruffled petals and 1 ¼" sepals which curl. This is an "oldie" that won a J. C. in 1973 and still has a lot of distinction today.



CREATIVE ART (Pierce, 1981)
16", MRe, light yellow self, green throat,
semi-evergreen
(JADE CHALICE x RICHLY BLESSED)



LILTING LAVENDER (Childs, 1973)
30", MLaRe, 8" lavender self with
light green throat. Dormant

THE JEANNE AND WARD FOOTE GARDEN **By Anna Rosa Glidden, Houston, Texas**

Located among gently rolling hills and tall stately pines, with a scenic lake nestled to one side, the Jeanne and Ward Foote Garden sloped downward to this lake, and was a sight to behold. Many clumps of daylilies adorned this garden, and there is still some debate in my mind as to my favorite five.

SUMMER SUN DANCE (McDonnell, 1982) yellow, was magnificent.

BEST OF FRIENDS (Spalding, 1975) excellent pink in every area I've seen it, had a mass of 12 showy blooms the day our bus toured.

LUMINOUS JEWEL (Childs, 1974) near-white with green throat, beckoned for closer scrutiny.

THAIS (R. W. Munson, 1978) has an unusual pattern, is purple with much blue infusion. My fondness for this cultivar was increased when I saw the mass of 6 blooms in Georgia.

FAIRY TALE PINK (Charlie Pierce, 1980) proclaimed his excellence as a hybridizer. All the Pierce daylilies seen in Atlanta stood tall and beautiful as a Memorial to him at the 1986 National Convention.



SUMMER SUN DANCE (McDonnell, 1982)
30", M, 6 ¾" gold with mahogany eyezone and
green-gold throat, semi-evergreen.
(Seedling x TOP HONORS)

Photo by Nell Crandall

DAMASCUS GARDENS

By Ken Henson, Dallas, Texas

Damascus Gardens is a beautiful commercial garden developed around the home and adjacent hillside lot of Bob and Peggy Belcher. The home sits at the end of a cul-de-sac in a lovely suburban setting of tall Pines that provide a light shady canopy over the garden. The entrance walk is flanked by beds of outstanding, new, beautifully grown cultivars that immediately command your attention, such as HATTERAS and JET SIGNAL by Sellers, SILOAM ROYAL PRINCE and SILOAM JUNE BUG by Henry, RADIANT EYE and RUFFLED IVORY by Ed Brown, PARTY QUEEN by Peck, BILLYE RED by Dove, DOUBLE FANCIFUL FINERY by Kirchhoff, MARCI by Petree, and CHARLES JOHNSTON by Gates. From the entrance, paths spread out through additional beds of the best varieties coming onto the market at this time.

Up the gentle hill to the left of the garden, Bob lines out his plants for sale and carries out his extensive hybridizing program in several large beds. He has some outstanding new seedlings; specifically a lavender spider C-144 and a ruffled, near-white F-9. The gentle hillside beds were on terraced levels, divided by plantings of Periwinkles and Stokes Asters. Other accentuating plantings of blue Hydrangeas and Hibiscus were in bloom.

Now comes the hard part - the five most outstanding cultivars as I saw them. I shall list them in alphabetical order:

BARBARA MITCHELL (Pierce, 1984) This 6" recurved pink with a green throat was magnificent. It has a slightly darker eye that one must look closely to see. It has very good substance.

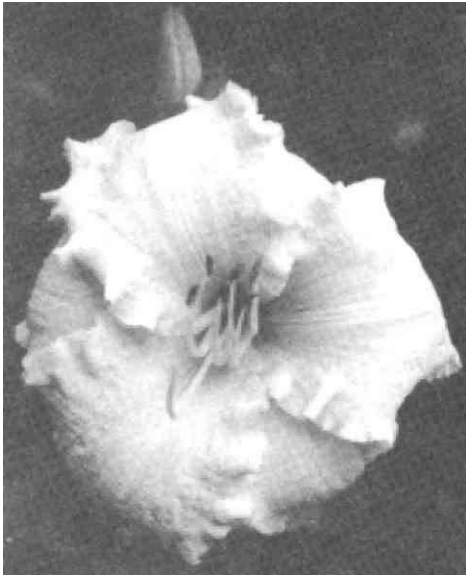
Belcher G-62 Seedling - 6" full-form ruffled pink self reflects fine breeding. The flower has a large green to chartreuse blend throat, with a small creamy midrib on each petal. Dimensions: 3" petals with 2" short, stubby sepals - great potential for the Damascus Garden.

BROCADED GOWN (Millikan, 1979) This 6" full-form ruffled light lemon cream with a chartreuse throat has already established itself as a classic.

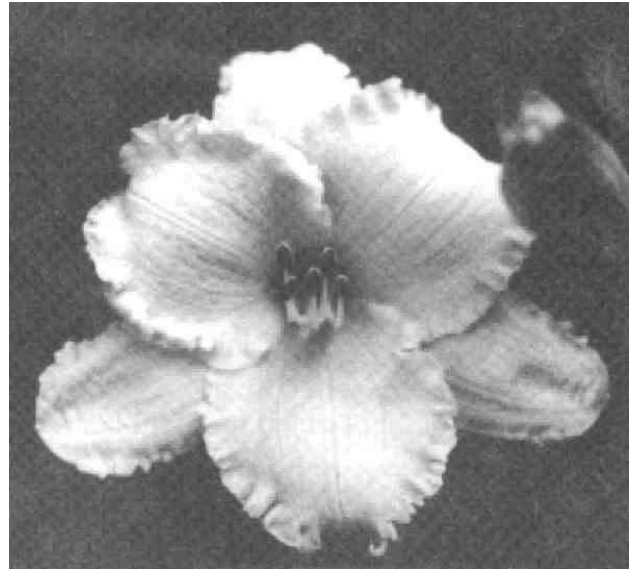
DECATUR PIECRUST (Davidson, 1983) This 5" light salmon pink self tetraploid with flat form and piecrust ruffling on petals and sepals is an improved DANCE BALLERINA DANCE.

JOLYENE NICHOLE (Spalding-Guillory, 1984) This 6" full-form ruffled rose blend with green throat and 3" petals will prove to be very popular.

DAMASCUS GARDENS



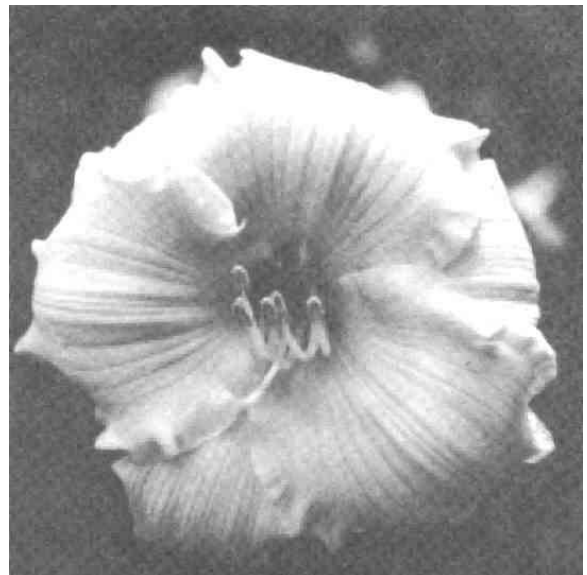
BROCADED GOWN (Millikan, 1979)
26", EMRe, 6" lemon-cream self, with chartreuse
throat. Semi-evergreen.
(BUTTERMILK SKY x SABIE)



DECATUR PIECRUST (Davidson, 1982)
tetraploid, 22", M, 5" salmon pink self, dormant.
(WAVING WINDS x ROUND TABLE)



JOLYENE NICHOLE (Spalding-Guillory, 1984)
14", M, 6" rose blend, green throat,
ext., evergreen



BARBARA MITCHELL (Pierce, 1984)
20", MRe, 6" pink self with green throat,
semi-evergreen.
(FAIRY TALE PINK x BEVERLY ANN)

BOB GEORGE - OWEN SHORES - HILLSIDE GARDEN
By Lucia Bjorkman, Hot Springs, Arkansas

The first glimpse of the garden was breathtaking -the last one of reluctance to be leaving such beauty.

White-painted Chinese Chippendale style chairs invited one to sit at the top of the hillside and look down upon the cool shady garden. A rock waterfall poured into a pool with pink Water Lilies, and the sound of running water could be heard from the pools and the fountain below. A circle of green velvet grass was a quiet oasis. White Caladiums along the fence and walkways of flagstone set in concrete were accented by red and white Impatiens. Tall trees shaded a bed of Sensitive Fern.

A short distance down the path, under the upper deck, baskets of lush Ferns swung above a large planting of gold, blue and variegated Hosta. Texture and color had been added to the deep shadows.

Now could be seen the sunny lower garden glowing with its fantastic collection of daylilies. Two clumps of OPEN HEARTH (Lambert) burned fiery red at each side of a shady arbor. More daylilies were tiered by large railroad ties all the way up to the opposite side of the house.

To pick five favorites was impossible. Every time I moved and looked around, there were five more favorites. But here are a few I liked.

BETTY WOODS (Kirchhoff) that incomparable 6 ½" yellow double that is on the want list of everyone who doesn't own it.

ATLANTA FULL HOUSE (Petree) super ruffled, ruffled, ruffled yellow self, 6 ½" with 3" petals. Set off by a lime-green throat and a heavy midrib, it's easy to see why it is one of Trudy's favorites.

COOL AND CREPY (Sellers) was just that. A light yellow with pink in its ruffling and a very creped texture.

SILOAM LITTLE GIRL (Pauline Henry), Shrimp pink with rose eye and green-gold throat, was a "big" girl with 15 blooms, exceptional bud count and branching.

PAIGE JACKSON (Yearwood) stood tall, 32" and covered with yellow 3 ½" blooms. An excellent background plant with strong scapes, bud count of 20-25 and 5-8 branches.

Normally, I never select a seedling, but Kate Carpenter's KC-16-85 impressed me with its incredible substance. Yellow blooms edged in bronze were on 24" scapes, 8 blooms were open and 10-15 buds were counted. Kate will introduce this next year - we hope.

Reluctantly, I left the garden, smudged the already smudged window panes when I tried to glimpse the interior of the charming house, and eagerly awaited tomorrow's visit. (I do hope Bob has a friend who "does" windows.)

Sunday, I returned, accompanied by Jim Cooper, for a tour of the interior of the house which Bob and Owen had restored and enlarged - a project taking over four years. Walking toward the house, notepad in hand, I was met by Bob who smilingly asked if I knew the meaning of the word "ineffable." I had to admit that it was not part of my daily vocabulary.

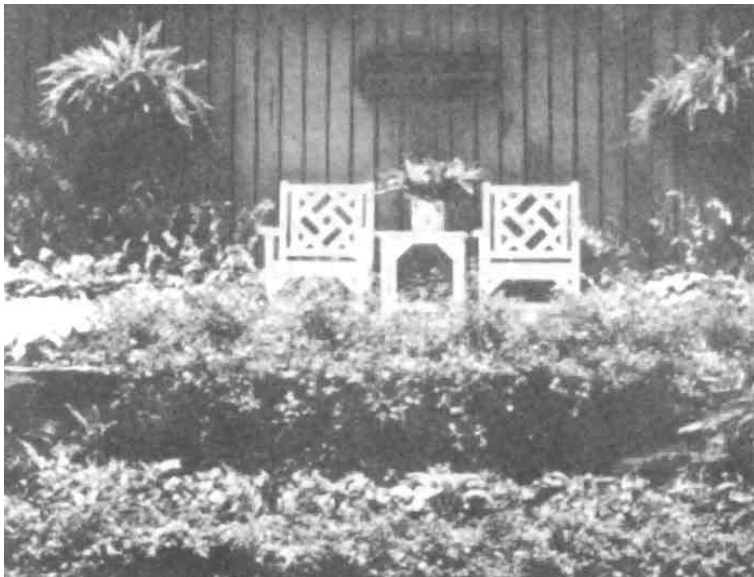
The living room decor was perfection. Traditional, elegant 18th Century English antiques were accented by French chairs and an ornate French desk. The urge to touch was irresistible. Mellow Mahogany blended with brocade. Comfortable furniture arrangements persuaded us to sit and enjoy a cup of coffee. A sunbeam, shining through the small-paned windows, made a scarlet puddle on an antique Oriental rug. Other Oriental rugs covered the wood floors, providing basis for furniture groupings. Lighted wall niches displayed small art objects, and oil paintings enhanced the walls.

In the dining room, the pattern of a stunning floral wall covering was repeated in the draperies which hung over the French doors opening to the deck. A crystal and bronze chandelier lighted an antique silver service on the buffet. Carved chairs surrounded the polished table with inlay banding. Here were all the ingredients for elegant dining.

A modern kitchen was tucked to the side of the passageway to the new two-story addition. The large upstairs room with two glass walls, vaulted ceiling and comfortable contemporary furnishings overlooked the daylily garden. What a beautiful vista! Downstairs another glass-walled room featured the organ where a friend had played soft mood music - piped into the garden - for our enjoyment on the tours. The addition was a complete change from timeless traditionalism to today's contemporary excellence - a harmonious blend of two diverse styles - a joy to experience.

Truly, George-Shores Hillside Gardens is ineffable - but unforgettable in its perfection and beauty.

Note: "Ineffable" - Incapable of being expressed in words.



George-Shores Garden



Bob George and Owen Shores

Photos by Nell Crandall

HAM-McGINNIS - A GARDEN OF MANY COLORS

By Joyce Lewis, Murchison, Texas

Atlanta - "Gate City of the South, Southern Hospitality" at its best, a National Convention dedicated to Clyde and Frances Davidson for their thirty plus years of contributions, both in service and creations of famous daylilies which will continue to be grown in gardens all over the world until the end of time. It was fun meeting a new hybridizer, not a future hybridizer but a NOW hybridizer, 13-year old Heather Herrington, whose EYE ON ATLANTA was the first slide shown at the slide show presentation. EYE ON ATLANTA is a lavender-mauve bitone with a large wine purple eyezone and chartreuse throat and is already on my "want list" for a future garden addition. A book could be written about the Atlanta Convention, but I'm supposed to be writing about five daylilies I liked in the Ham-McGinnis garden.

Fred Ham and Jim McGinnis have one of the most extensive collections of Hems of any garden I've ever visited. Jim's love of miniatures provides an exciting welcome, as they are the ones to greet you as you enter, along both sides of the driveway. Fred's taste demands the newer and best of the larger Hems, though of course they overlap each other, and this combination means the best of all sizes, forms, color, etc., showing off in their garden.

I could have really enjoyed lying around in their back garden viewing the lush Hosta, Ferns, and other shade-loving plants, but picking five favorite daylilies with over 100 guest plants besides their own extensive collection is a time-consuming "chore." Am I a selfish person when I bypass the beautiful Hems I am already growing in our garden and see only things I wish I were growing? VINO VERDE (Ater), MIDNIGHT MAGIC (Kinnebrew) and others could well be my picks were they not growing at Bluebird Sands, for they were beautiful and performing beautifully, but others linger in my mind - ones I'd never seen before.

JENNIE RUTH (J. Kell Hinson, 1985) is a large recurved lavender with a darker band encircling a very large chartreuse eye and greener throat. Reverend Hinson is getting a reputation for his wide-petaled extra large cultivars, and I can certainly attest to that, for everyone of his I viewed seemed to stand out as giants alongside most better known Hems.

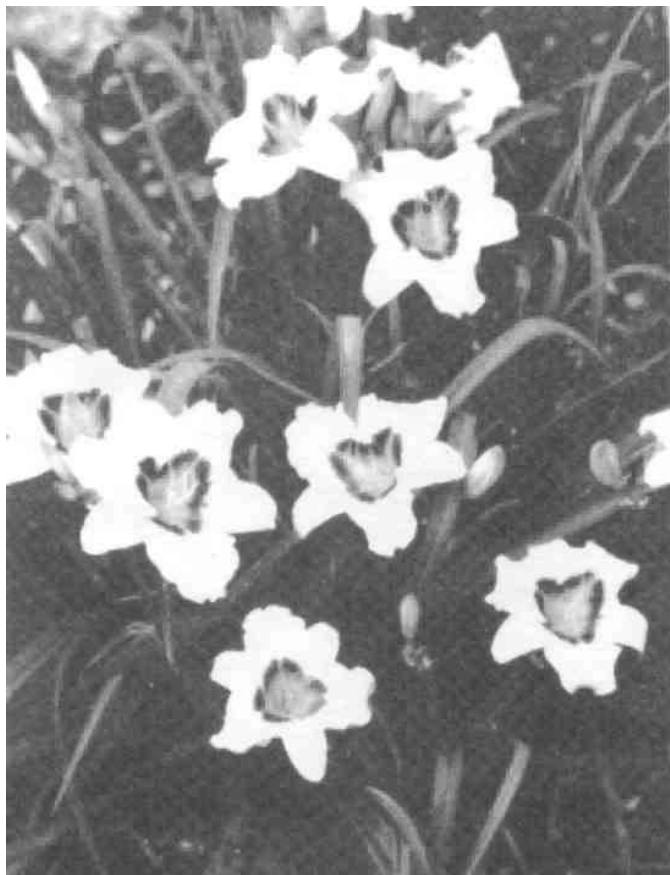
DELICATELY YOURS (Yancy, 1980) is registered as a 6" cream overlaid pale lavender brushed orchid with a large green throat. I found myself returning to DELICATELY YOURS several times, and each time I could see new colors emerging before my eyes. This ruffled beauty is not the full round petaled common Hem of today, but is as pretty a polychrome as I've personally ever had the privilege of viewing.

BOSOM PALS (Abercrombie, 1976) is a very ruffled 6" creamy yellow with a rose eyezone and green throat. The overlapping petals recurve and nearly hide the broad recurved sepals, giving a very rounded effect to the blossom. This 10-year old cultivar easily held its own, in my estimation, nestled among the newer queens of tomorrow and, in fact, outshone most of them surrounding it.

PANDORA'S BOX (Talbot, 1980) is a 4" cream, really a near-white, has a bright distinctive clear purple eyezone and green throat. This was my choice for the Florida Sunshine Cup, and it did come in second, but with its 10-12 open blooms it stood out head over heels among the other small flowers alongside the driveway. A clump of this Hem is beautiful!

ORCHID DREAM (Crochet, 1977) This 5" orchid and cream bicolor with its green throat was one I had never viewed before. It has perfectly formed small ruffling completely around its edges, and its darker veining enhances its beauty. It's about the only "veined" Hem I've seen that I think is more beautiful because of its veining.

Gosh, only five! I have to mention two seedlings for dream material until their introductions! One is a double medium yellow self of Daniel Stateler, No. 307-28-1. This flat ruffled broad petaled beauty has an inner circle of shorter broad petaloids that makes it as distinctive a blossom as I've ever seen. I'm looking forward to the day this cultivar hits the show ring. The other was a numbered tetraploid R-1981 and I never got around to finding its hybridizer. This ruffled beauty was a rather light yellow with broad petals and a complete self, no hint of green or any other color in its throat other than its one color. Someday I'll learn its owner, but until then I'll just keep on dreaming, adding to the memories of a wonderful beautiful Convention.



PANDORA'S BOX (Talbot, 1980)
19", EMRe, 4" cream with purple eyezone
and green throat. Evergreen.



ORCHID DREAM (Crochet, 1977)
28", EM, 5" orchid and cream bicolor
with green throat. Dormant.
(ELLEN CROCHET x BOUNDLESS LOVE)

THE PETREE GARDEN By Mildred Schlumpf

Upon arriving at the Petree garden, I went at once to the rear garden which I observed contained mostly Petree seedlings. There were, however, a few named varieties. The five that appealed to me most were:

WYNN (Criswell, 1975) 28", M, 4 ½" yellow self with green throat. I observed this one seemed to be used in quite a number of the Petree seedlings. It is a ruffled lime yellow and it had a lot of bloom and buds.

SUMMERTIME MAGIC (Petree, 1984) 4 ½" bloom, yellow blend.

JANET GAYLE (Guidry, 1976) another favorite, was blooming beautifully. It is 6 ½" cream pink blend.

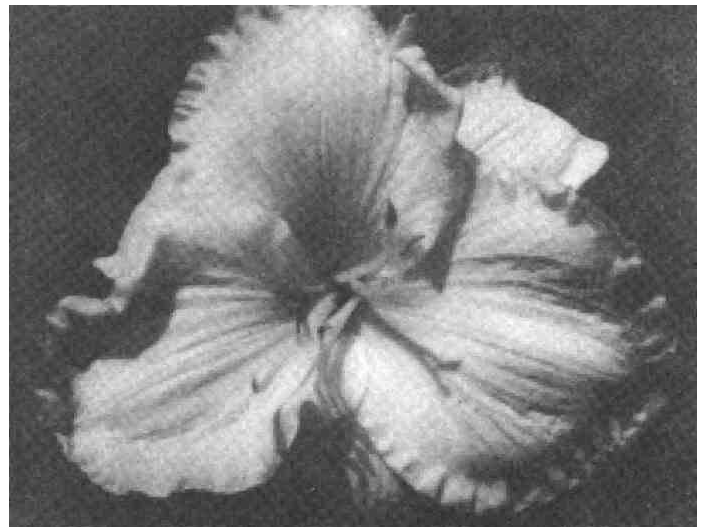
SILOAM MAMA (Henry, 1982) a ribbed golden yellow and very showy.

Petree Seedling (WYNN x 80-y-4), a small crisp lime, very ruffled.

I spent all of my time in the rear garden and regret that I did not have time to see all the beauties in the front garden.



SUMMERTIME MAGIC (Petree, 1984)
24", M, 4 ¼" yellow and pink polychrome
with green throat. Dormant



SILOAM MAMA (Henry, 1982)
24", M, 5 ¾" yellow self, green throat. Dormant

THE MITCHELL GARDEN
By Nell Crandall, Houston, Texas

Much has been said and written about the flower BARBARA MITCHELL hybridized by Charlie Pierce. When I came to this garden, I was privileged to meet the lovely Barbara Mitchell in person, a gracious hostess who welcomed us warmly.

She grows many of Charlie Pierce's introductions, and had a Memorial Garden to Charlie. His death earlier, during the convention, had saddened many people. My favorite five daylilies in this garden were all by Charlie Pierce. They were:

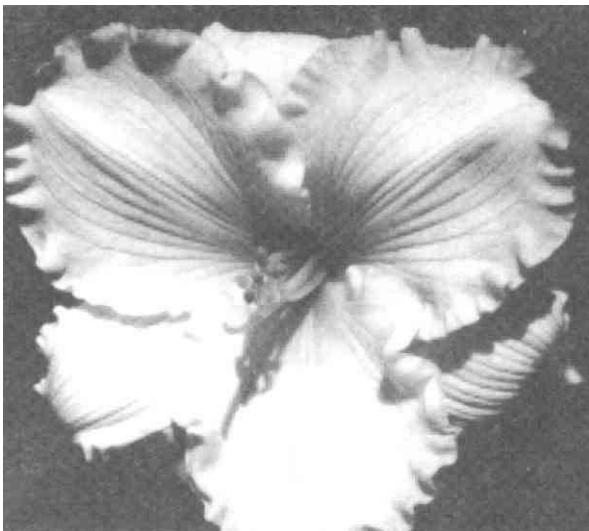
FAIRY TALE PINK (Pierce, 1980). I voted on this one for the President's Cup, and it won. It is pink perfection! There was one bed bordered in newly planted FAIRY TALE PINK plants, and I think each one had at least one bloom. Can you imagine - a whole border of them!

BARBARA MITCHELL (Pierce, 1984) ruffled pink. Everyone wants it, and it is SOLD OUT everywhere.

ROSE EMILY (Pierce, 1982) low growing rose, ruffled with green throat.

MORNING JEWEL (Pierce, 1982) 6" ruffled pink with green throat - a cross of AMY STEWART x HOLIDAY IN DIXIE.

SURPRISINGLY PINK (Pierce, 1983) Another great pink with ruffles. This ranks right up there with BARBARA MITCHELL, in my estimation. In fact, I was having trouble deciding which I liked the best.



FAIRY TALE PINK
24", MRe, 5 ½" pink self with green throat,
Semi-evergreen.
(QUIET MELODY x JANET GAYLE)



SURPRISINGLY PINK
18", EM, 6" pink blend with green throat.
Semi-evergreen.
(Seedling x BEVERLY ANN)

HAROLD MCDONELL GARDEN By Elaine Boudreaux, Sulphur, Louisiana

The city bus couldn't make it up the hill. Our group left the bus and walked up the road. A thick green forest on each side of the road made me wonder how far we would walk (uphill) and when we would see a house, or a garden.

We did reach the top of the hill and leveled off to the left. Through an opening in the trees I saw a large white house with our host, Harold McDonell, at the end of the walk waiting to greet us.

The beds were on the sides and at the rear of the house. Even with the hot and very dry weather in the Atlanta area, the daylilies were exceptionally well-grown, with very green foliage. I think some of the cultivars we grow along the Gulf Coast grow a bit taller in the Atlanta area.

I was impressed with McDonell's 1984 introduction MARY'S GOLD, a brilliant gold, 6 ½" tetraploid of very heavy substance.

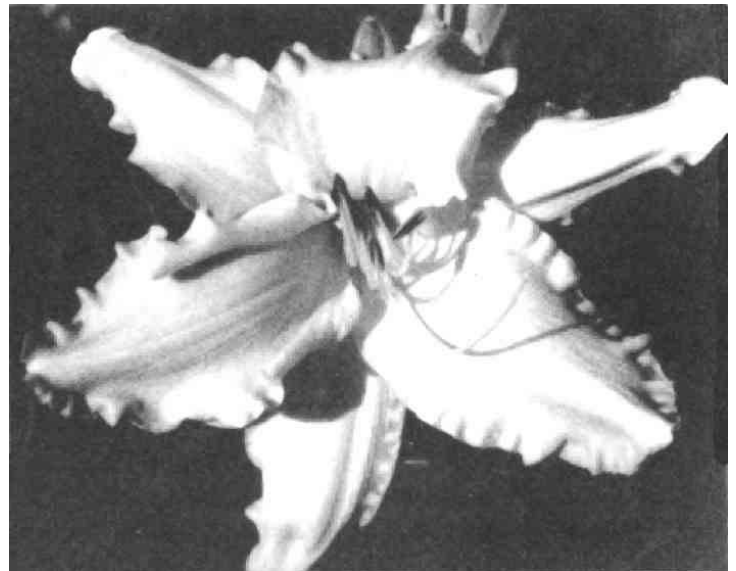
A very attractive and unusual daylily is PALACE PAGODA (Munson, 1978), a 5" cream pink, rolled back double with a center tuft of petaloids.

RED VOLUNTEER (Oakes, 1984) was beautiful in McDonell's yard, and I believe in every yard we toured. It is a 7" tetraploid, 30" tall, a clear candle red self with a gold-yellow throat. It was an outstanding red with a high bud count.

ANTIQUE CAROUSEL (Guidry, 1984), a 7" lemon yellow blend with a green throat was showing its excellent heavy substance in Georgia, proving that the deep South hybridizers, and especially Lucille Guidry's cultivars, do well in the upper South. We saw many other lovely, well grown Guidry cultivars in McDonell's garden.

MYNELLE'S STARFISH (Hayward, 1982), a 10" spider type, cool yellow that has a most unusual shape, was in excellent form in the garden. The scape holds the large flower well.

These were just a few that caught my eye. There were so many beautiful guest plants, so well grown, that my "want list" increased rapidly.



MYNELLE'S STARFISH (Hayward, 1982)
20", MRe, 10" ivory self with green throat.
Dormant.

Photo by Nell Crandall

**LUCILLE WARNER'S CLOSING STATEMENT AT THE EXHIBITION JUDGES' CLINIC
AT THE NATIONAL CONVENTION IN ATLANTA, GEORGIA, June 19, 1986
Taped and transcribed by Betty Roberts**

One of the primary purposes of an Exhibition Judges Clinic and for your years as an Exhibition Judge is to give you and teach you respect for the hybridizer. Thirty years ago when I first started growing this beautiful flower and about twenty-seven years ago when I started hybridizing - I was a very young woman - and I was lucky enough to have a close friendship with David Hall, Orville Fay, Ophelia Taylor, W. B. MacMillan, and Edna Spalding. They were all willing to sit down, give me advice, give me the benefit of their years of experience, and urge me to climb up on their shoulders. And I want to tell you, it's our responsibility to the young hybridizer to give him any help they want, need, and asks for. We encourage all of you to be patient and outgoing with any little bit of knowledge that you have. I'm a very small duck in this great big puddle, and nobody knows it any better than I do.

To a great extent, the future and advancement of the Society is in the hands of the hybridizer. As their work improves, so will the Society improve, and so will the popularity of the *Hemerocallis* increase. Accomplishments of the last few years have been spectacular, but many of our registrations are not worthy of the honor of being registered. There is a need for greater care in discriminating in selecting seedlings to be registered and introduced. By using more care in breeding methods and by carefully checking seedlings against good performance yardsticks as mentioned today, it should be possible to produce an even greater refinement in a new introduction. Every hybridizer, both large and small, should endeavor to use the very finest materials in their work. By so doing, we may accomplish that which seems to be so desired by a great majority of our members the production of cultivars that will perform equally well in all climates and all soils.

This story was sent to me by Marvin Granger of Lake Charles, Louisiana. It is from The Iris Society of Australia publication "The IRIS" of June 1986.

"To my ears comes the story of the gardener who made the sad discovery that many of his plants had unaccountably died.

A religious man, he appealed heavenward. "Lord, I have always tended my garden properly, but now I have trouble keeping my plants alive. Please help me through this crisis."

Weeks went by, punctuated by further appeals. Still no results. In desperation he made one last, fervent supplication. "Lord, Lord, on bended knees I entreat you - please let me continue to grow beautiful plants."

Instantly, a great booming voice came from on high. "How about giving me a chance, will you? Plant some seeds."

The following pages are dedicated to our Region 6 hybridizers, who planted some seeds.



Reprinted from Region 4 Newsletter

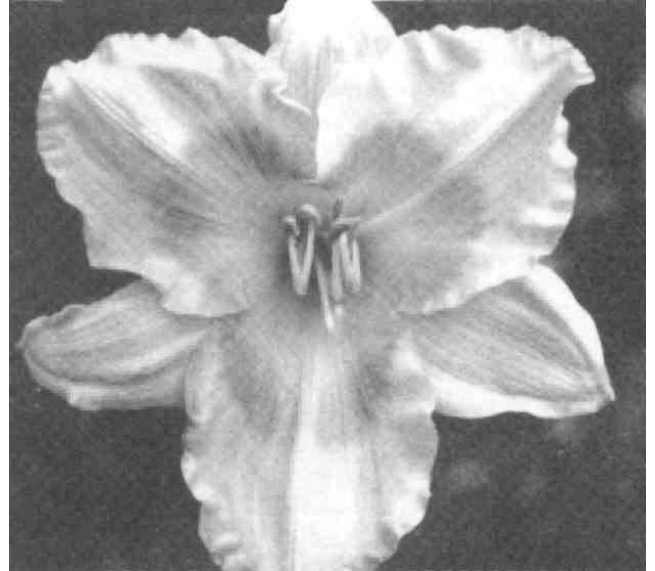
Jean Barnhart, Nacogdoches, Texas

Written by Delores Jones

Always a flower lover and amateur horticulturist, Jean Barnhart was introduced to daylilies by her grandfather while she was still a young girl. Her interest in daylilies was rekindled in the 1970s when a friend led her to the gardens and works of Lucille Williamson and J. L. Cruse. Using their registered stock for hybridizing, Jean initially sought to achieve a better pink - a big, round, flat pink, with plenty of ruffles.

Her acquisition of registered stock grew as rapidly as her interest in hybridizing, and soon she was working with MAMIE SCHULTZ, JANET GAYLE, FAIRY TALE PINK, BEVERLY ANN, MARTHA ADAMS, and a host of Williamson and Cruse seedlings. She hopes to achieve heavy substance, vigor, sun fastness, clarity, high bud count, and multiple branching.

The desire to see and experience the daily bloom of her seedlings - some five thousand now - helped sustain Jean's recovery from a severe head injury in 1981. With an effort no less remarkable than Patricia Neal's, Jean taught herself not only to read and write, but also to walk again. Since that episode, it has been daylilies full-time.



ETTA MARIA (Barnhart)
(Your editor is growing this as a guest plant for
the 1988 National Convention)

Photo by Nell Crandall

Lucille Williamson's garden was purchased in 1984, and Jean now maintains registered stock from the major Southern hybridizers. Her recent acquisition of the garden of Bob Dove of Pleasanton, Texas, puts her heavily into tetraploids, as Bob has successfully converted all his best diploids. Jean will also continue Bob's work toward true blues and whites.

In addition to the physical characteristics noted, Jean feels that a good daylily has "eye-catching appeal" - an indefinable trait that enables one to isolate it from a field of many. Her seedling BO406E, a 3 3/4" gold, with a large plum eye, is such a flower, not only in her opinion, but also in the opinion of the author of this article. See it in Houston in 1988 or in Nacogdoches in the Spring of 1987.

Joseph C. Boudreaux, Sulphur, Louisiana

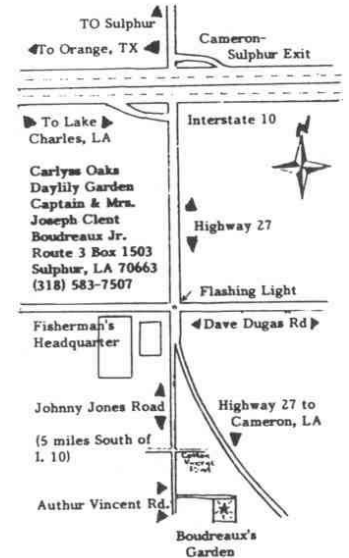
Honorary Region 6 Hybridizer, being a member of Gulf Coast Society of Southeast Texas

My hybridizing began in 1966, just for fun, but I started seriously in 1981 and registered my first daylily in 1986. It is AUTHUR VINCENT (WILLIE BILL x JANET GAYLE).

We are working on a daylily that will open in the morning and stay open for 24 hours.

So far, I believe CARLYSS NIGHT OWL has been my most successful, and it is approaching our goal. I have several seedlings under observation. Fortunately, we have 27 acres, so space is no problem. I had 4,000 seedlings last year, but kept only two for more observation.

Bad form and muddy color are two traits that would cause me to discard a seedling immediately. I keep the ones with good clear color, heavy substance, good symmetrical form, good branching, and high bud count.



Map to Carlyss Oaks Daylily Garden

While we have hybridized for years, we just registered our first four daylilies this year. They are:

AUTHUR VINCENT, a 6" gold with red eyezone. It sometimes doubles.

EUNICE ROBINSON, a 6 ½ - 7" flower on a tall scape, gold with brown eyezone.

AMISTY MCCLELLAND, a nice flat 6" flower, yellow cream.

CARLYSS NIGHT OWL, a nice 6" flat light cream that sometimes doubles.

All have very heavy substance, rebloom, AND start blooming in early May.

I do not sell commercially, but we love friends. I am putting in a map to our garden in to drop in for a visit.

Thanks for considering us Honorary Region 6 hybridizers. Elaine and I started our daylily life in the Gulf Coast Society of Southeast Texas, and it was there that Mable Nelson introduced us to the Regional Meetings and the American Hemerocallis Society in 1980.

Naomi Carwile, Sweeny, Texas

I started hybridizing daylilies in 1955. The first one I named was PURPLE PEACOCK, I think. I also named a large spider-type in deep dark purple FRENCH COFFEE. These were discarded years ago, as better ones appeared in the seedling bed.

I started just for fun, but today I do have a goal - to develop doubles in pleasing colors with good form. They must bloom double in every flower, or to the compost they go.

My most exciting cross was LOUISE MERCER x POUTER PIGEON, both doubles. I used LOUISE MERCER because it was the first double pink I loved, most unique color combination (beige, rose, and lavender). POUTER PIGEON is from Vera McFarland, and LOUISE MERCER is from Enman Joiner. One seedling out of this cross was named CABBAGE ROSE. Many people have it on their want list. I have registered DOUBLE TEXAS ROSE from this cross, also.

I grow about 500 seedlings each year. I discard the first blooms that are not to my satisfaction. I give some away. Each year, I keep juggling the best to make space for the newer seedlings.

I look for good form first, and second pleasing colors, and height. If one is unique, I mark it with a plastic fork, prongs up, for further evaluation. I do a whole lot of selfing.

Some of mine I'd like to tell you about are:

1. MIMI ANDRE (named after me) My father was from France and always called me "Mimi." Andre was my maiden name. The flower is a delicate sheer pink double, out of KEITH KENNON.
2. LOUISIANA SPIDER, a deep gold spider, huge, and the first double spider I've ever seen. Out of DOUBLE EVA.
3. RAZZLE BERRY, a double rose-red. Small, most of the time just 2".
4. CABBAGE ROSE (see photo) Picture was taken by the late Stanley Hyer.
5. BORDER ANGEL, a low small yellow double out of DOUBLE CUTIE. We need low yellows for borders. I am getting many small yellow doubles from BORDER ANGEL x a sibling.

My garden will be one of the tour gardens for the 1987 Region 6 Meeting.



CABBAGE ROSE (Carwile)
Beige with green throat, tailored form,
pale yellow design on petals

Photo by Stanley Hyer

Rodger Croker, Llano, Texas

When I first became interested in hybridizing, there was a noticeable lack of good red miniatures which intrigued me. I started out making crosses between RED MITTENS and INKSPOT, which were just about the best at the time that were available.

Numerous seedlings were raised, but only one was deemed worthy of registration and was named RED BANTAM. Frustration was the word concerning my hybridizing until J. L. Cruse, Jr. sent me a rose red, small-flowered seedling that was very low growing and sported a large green throat. Sometime later, it was named by J. L. Cruse and registered as RODGER CROKER.

Using RODGER CROKER as pollen parent on INKSPOT, I raised 209 seedlings. All were 28-32" tall and small flowered, except one true miniature which was named APPLE DUMPLING.

APPLE DUMPLING and its offspring, CRANBERRY BABY, crossed on some of Edna Lankart's reds are proving to be excellent parents.

In 1985, I registered LITTLE SHY, in honor of my good friend, Shy Osborn. It is a cross of LITTLE FAT DAZZLER x LITTLE ZINGER.

My goal is to produce red miniatures with the recurrent bloom of FOREVER STELLA (Jablonski), scape height and bloom size of SNOOPY (Warner), and form and ruffling of SILOAM URY WINNIFORD (Henry) and CAMDEN GOLD DOLLAR (Yancey).

Since none of these are reds, that elusive goal lies somewhere in the future.

I do get lonesome to see some other color among my seedlings, so I am watching LAV-06, which is lavender. I even made a spider cross this year - an unidentified vigorous evergreen yellow x KINDLY LIGHT. The latter struggles so to survive here from year to year.

My daylilies are introduced by Bill Ater, 3803 Greystone Drive, Austin, Texas, 78731. His pricelist may be obtained by sending him a 39¢ stamp.



LITTLE SHY (1985)
12", MLa, 3 ¼" bright red self with
tangerine throat. Semi-evergreen.

Photo by Shy Osborn

Henry L. Crowell, Bridge City, Texas

I began hybridizing in 1966, hoping to get just good daylilies. Then I turned to reds, purples, and lavenders. My goal now is to get a big red, 7-8", with wide petals and sepals, with ruffled edges and with good branching.

The first daylily I registered was JOURNEY'S END in 1974. It was a cross of ICE CARNIVAL x CHOSEN ONE.

My most successful cross has been Seedling x Seedling that I got several reds from. I registered TWISTER, a good colorfast red, approximately 6" with good substance.

The first few years I hybridized, I grew about 1,000 seedlings a year, but now I don't have room, and grow only about three or four hundred.

When I evaluate my seedlings, I look at the color first, but I really notice the substance most. Then I look for branching. Then I check to see if it is fertile, and the pollen is good. I check the width of the petals and sepals and see if there is diamond dusting on them. I notice if the scape is strong enough to hold up the flowers.

Of my registrations, TWISTER is about the best I have. It is red with a small extra petaloid in the center. FLAME OF GEORGIA is real good to use as a pollen parent, probably the best pollen for reds that I have as of now. It has given me lots of reds with green throats.

I do not put out a list, and I really don't push my daylilies commercially. I sell very few.

J. L. Cruse, Jr., Woodville, Texas

By Rodger N. Croker, Llano, Texas

For approximately ten years, J. L. Cruse and I have been friends. We have enjoyed evaluating plants for each other and carrying on an avid correspondence. The occasions I have had to visit his garden have been real highlights.

Though his health has diminished and he has had to cut back, he has continued to remain keenly interested in hybridizing. I have marveled at the vast strides he has made in only the past couple of seasons. His large reds, the distinctive eyed ones, his miniatures, and outstanding ones in other colors, as well, indicate his keen interest in most areas of daylily breeding.

J. L. Cruse began hybridizing in the early 1960s. He remembers his earliest daylilies included MARY ANN (Hall). His goals have been to obtain a sunfast blossom with a scape of about 24" that is well branched. A high bud count is also a desirable trait.



GYPSY WATCHFUL EYE

Photo by J. L. Cruse

GYPSY MAIDEN, a coral with a large purple eye, is considered the parent with the most potential. From it has come such cultivars as BURNING DESIRE, EXOTIC EYE, GRAND WAZIR, GYPSY BAND, GYPSY COMET, GYPSY DARK EYES, GYPSY FANCY, GYPSY SPELL, and numerous others. Though he does not keep records as he formerly did, his new GYPSY WATCHFUL EYE (C-100-1) is believed to also be a descendant. It is one of this season's most exciting registrations.

NIGHT SHADOWS has produced some excellent offspring. NEW BEGINNING is from NIGHT SHADOWS x HOMEWARD BOUND. One of his best is GYPSY EMPEROR which holds in all kinds of weather - a beautiful red, it is further enhanced by a green throat.

My personal favorites of his are BURNING DESIRE, a medium red with a deeper eye; and the coppery miniature COPPER DOLL. Somehow these stand out as positively different in the sea of daylilies where we often have so many look-alikes.

The best 1985 and 1986 seedlings were used as pod parents with pollen from BEVERLY ANN, GYPSY EMPEROR, JANET GAYLE, RED CHARMER, ROSE EMILY, ROSE SWAN, and SURPRISINGLY PINK. Only the best of his miniatures and small flowers were used in crosses. These seedlings will be sold for \$35 per 100 (from November 1986 - April 1987) and will include half large-flowered seedlings and half small-flowered seedlings. For those desiring only large ones, the price will be \$45 per 100 plants.

Albert (Bobo) Faggard, Beaumont, Texas

I started hybridizing daylilies in 1972, but before that I was and still am breeding Louisiana Irises. My first registered daylily was BARNACLE SCRAPER in 1976. It was a cross of RED KNIGHT x VAGABOND KING.

When I began, it was just for the fun of it, but now I have many goals:

1. Full-form consistent doubles
2. Miniatures with their own personality and low height
3. Great tetraploids like Munson, Edgar Brown, Howard Hite, and others.



MAMBO MAID (1983)
19", EM, 3 ¼" orange with darker eyezone
and gold throat. Evergreen.

Photo by Nell Crandall

A small black that had a vibrant gold throat was a result from my most exciting cross, but I lost the stock. LITTLE SWEET TALK which is from MARIETTA x LITTLE FAT DAZZLER has so many wonderful small flower qualities.

Every year I plant 500-1000 seedlings. Space is a big problem since I display so many varieties, and I have to be extremely selective and discard immediately the ones I dislike. I discard all those with an irregular form and lack of clear color, or too tall miniatures or trumpet-shaped flowers and keep the ones with unusual colors, eye patterns, or full ruffled form.

I have several new registrations:

CAPTAIN EDDIE is a J. C. tetraploid winner, ruffled bronze with edging.

LITTLE ORANGE TEX is a quality small flower that is golden orange.

LITTLE POT LUCK is a multi-branched reblooming yellow.

LITTLE SAND CRAB will grab you, sand blend in color.

LITTLE STRAWBERRY SHORTCAKE is a strawberry rose with wine eye.

MAMBO MAID is a 3 ¼" lovely ruffled orange. Other tetraploids are being registered in 1987.

I do sell commercially. I introduce my own, and also the daylilies of Edgar and Betty Brown of Orange, Texas, which I believe to be some of the best in the world. I have just started selling my varieties of Louisiana Irises. A pricelist is available. Write to Albert Faggard, 3840 LeBleu, Beaumont, Texas 77707. Two stamps will certainly help with the postage cost.

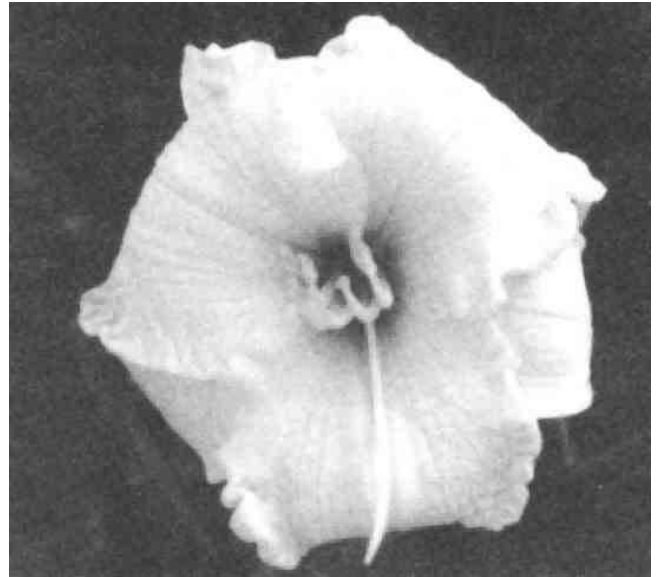
Anna Rosa Glidden, Houston, Texas

Mrs. Ida Harrison taught me how to hybridize, and I began in 1970, strictly for fun. It was mostly Homer's idea. My first registration was EMMA LOYS LEE (1976), named for my mother. Its pod parent was HALLELUJAH CHORUS.

One of my goals is to get a really good double, even better than YAZOO SOUFFLE. Also, I am breeding for a pure white. Now that the spider craze is on, I wish to breed a really nice spider.

I truly think CHARMING CINDY is my best cultivar to date. It came from INNOCENT CHARM x CINDY MARIE. I registered another one from this cross.

I grow 300-600 seedlings each year. It varies for me. The space problem has been minor. I give lots of daylilies to our sales, and sell at the Houston Bulb Mart. In the past, we just bought more space.



CHARMING CINDY

Photo by Anna Rosa Glidden

Two traits are "no-no's" in my garden - a weak scape and a poor substance bloom. I keep the seedlings with unusual patterns or a new exciting color.

In 1986 I registered two which I rate "Very Good." These won't be available until 1988 or 1989:

CHAMPAGNE BAUBLE is a champagne color with a narrow purple band, and very recurved. I love it.

VELVET CURTSY is another one I love, but this dark creped purple needs afternoon shade.

WHITE LEATHER is a large flower with very heavy substance, and is almost a total self.

I do sell commercially. I have many daylilies of my own, from \$3.00 GALADRIEL, to \$35.00 DOUBLE KONA SUNSET, and all prices in between. GALADRIEL is one that is a 5-time bloomer. It is from BITSY. If it were known all over the U.S., I think it would rank with STELLA DE ORO. I also sell daylilies from other hybridizers. My most expensive when Homer bought it is IMPERIAL DRAGON - \$175.

Marvin Granger, Lake Charles, Louisiana

(Honorary Region 6 Hybridizer, being a Member of the Gulf Coast Society Of Southeast Texas)

I started hybridizing Louisiana Irises in 1946. I did a few crosses of daylilies in the early 1970s but nothing much came of it. I did register DOUBLE BUBBLE in 1973. It is a cross of an unnumbered seedling of mine with BALLS OF RED by Dr. Miles.

When I started hybridizing, it was just for fun. I have just recently established a hybridizing goal, based on seedlings I am getting out of BAYOU RIBBONS. I'm going to work with the "edged" ones, which are presently in a sort of "novelty" category.

My most exciting cross has been BAYOU RIBBONS with a seedling I got from Lucille Guidry; a reddish-orange daylily with a tan edging around the petals. There are no registered seedlings from this cross, as yet.

I grow about 300-500 seedlings each year. Because of lack of space, I "farm out" a lot of them in my niece's yard across the road and about a block down the street, as well as in my friends' yards. I ALWAYS have space problems and haven't found any solution to it except the above-mentioned farm-out system. I make too many crosses and have too many seedlings every year.

When I consider which seedlings to keep, they must be attractive to look at. A new color or blend of colors is good. They must have good form and at least a little ruffling. The ones I throw away are those with pointed petals, lack of good form and substance and with weak droopy foliage.

I haven't registered any daylilies since 1984. I am waiting on the crop of BAYOU RIBBONS seedlings to bloom. Also some seedlings out of my daylily DOUG LAFLEUR crossed with FAIRY TALE PINK are showing great promise, but I like to grow them several years and see how they perform over a period of time.

My daylilies for the most part are still in clumps, and not lined out. I would go commercial only on a limited basis because of the help problem.



BAYOU RIBBONS (Spalding-Granger, 1984)
14", M, 5" rose bitone with deeper
rose eyezone green-yellow throat. Ev.

Photo by Nell Crandall

Tom J. Hughes, Mansfield, Texas

One of our first registrations was DUCHESS OF DALLAS (PINK PROFUSION x CORAL MIST). It won a J. C. in 1959 and an Honorable Mention in 1966. It won the American Home Achievement Medal in 1960.

I began hybridizing in 1956, just for my own amusement. My goal now is to improve bud count and repeat tendencies along with the quality of the flower, i.e., ruffling, sun fastness, and ALL the good stuff.

APPLE TART, a red tetraploid, has been my most successful cross. It has just done wonders all over the country. It won Honorable Mention in 1977, Award of Merit in 1980, the Richard C. Peck Award in 1981, plus more.

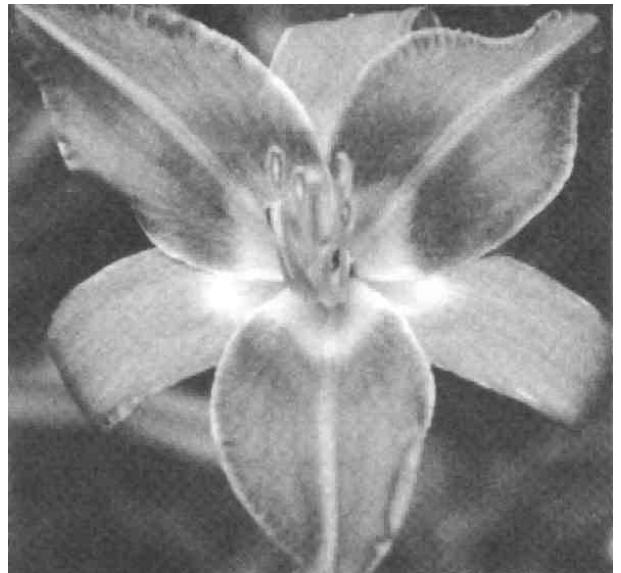
I grow 1000-2000 seedlings each year. I am blessed with space, but also I am blessed with landscape people who use many of my seedlings for mixed beds.

When I walk down my rows of new seedlings, if the bloom melts in the sun, I discard it immediately. But if it doesn't melt and is a persistent rebloomer, I keep it.

I registered ten daylilies in 1985. To be truthful, all are nice, but none are what I would call outstanding. Out of all these, DESIGNER ROSE is my favorite because it is unique in color.

I have some 1986 introductions that are looking real good at this time. I have high hopes for some of them.

I do sell to the public, and I also print a pricelist which I mail out to folks who are interested. I am just about out of the 1985 lists and will not have a new one until early in 1987. Write to Tom J. Hughes, 2450 North Main Street, Mansfield, Texas 76063 if you would like a 1987 pricelist.



APPLE TART (1974)
28", evergreen, dark red, ruffled, tetraploid

Wilma LaGasse, Lake Jackson, Texas

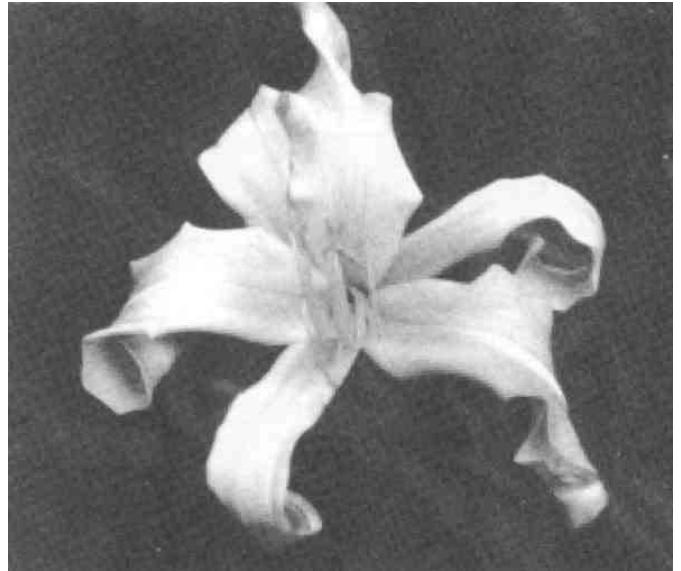
I began hybridizing in 1962, just from curiosity. My first registered daylily was BESIDE THE SEA, a cross of a seedling x FRANCES FAY.

My hybridizing goal is the hope that each seedling cross will be better than the parents.

My most successful cross resulted in KELLEY'S CURLS. There were no other cultivars worth keeping.

I grow probably between 50 and 100 seedlings a year - as many as I can find room for. When I get desperate for space, I discard some older seedlings.

When I see a seedling with interesting shape, good texture, nice fragrance, clear color, and good height, I keep it. I throw away any that have a tendency to melt. I do not like skinny scapes that sprawl.



KELLEY'S CURLS (1981)
30", EMRe, 4 ½" pink and yellow bicolor,
green throat. Semi-evergreen.
(EMERALD ISLE x BRAZOSPORT)

Photo by Nell Crandall

I have a 1983 seedling I am considering registering. It is a 29" greenish-yellow, with pinched, ruffled petals and quilled sepals. It is lightly fragrant, and has a lime throat. Several people expressed an interest in it. It bloomed abundantly from May 3 to July 3 this year.

I sell only if someone likes one of my daylilies and asks to buy it.

(Editor's note: KELLEY'S CURLS is in the collections of several of my Spider Robin members.)

Edna Lankart, Tyler, Texas

HYBRIDIZER OF SORTS

I was quite pleased with my seedlings last season, so I said, "Go for it, old girl." I aim to go after the Big Guns and have armed myself with some of the best ammunition money can buy. Remember when I said, "The top hybridizers need not worry about me because for me to be a top hybridizer, it is not enough that I should succeed, all others should fail." Well, forget it, and keep watching behind you. I shall plan my strategy all Winter and if this new ammunition doesn't help me to the front line, I will be forced to believe SOMEBODY up there doesn't like me and may plow up the whole thing and admit defeat, or may change my strategy or may blame it on my advancing years.

I am a firm believer in getting the best stock from the best hybridizers and adding this to the best stock I have. I like strong and bright colors to mix with those anemic colored gems so many like. I like something different, very round and full form, many ruffles - good bud count won't hurt either. I worked with my LITTLE FAT DAZZLER, LITTLE FAT ANGEL, and LITTLE ZINGER and have so many good seedlings from them - most are selfs, fairly full and in many shades of red. Next, I shall cross with Lewis' round full black red TEXAS SHOGUN. It blooms perfect, but could be shorter. I will also use many of Pauline Henry's (this will add eyezones), J. L. Cruse's LITTLE TANAGER, LITTLE GORGEOUS, LITTLE MAGGIE, and more. I want some of the new ones from Elizabeth Hudson Salter, but may have to wait. She is really coming along.

Those tetraploid fans tell me I must go for them as they are the future. This year I was able to get three on the top of my wish list. VERA BIAGLOW (Moldovan) was at the top - WOW! I had wanted HOLIDAY FRILLS (Peck) since it was in living color. I also managed to get five more of her ruffled tetraploids and another top tetraploid BENCHMARK (Munson). These colors will blend together and I can't wait to see what they will produce. SHOCKWAVE (Brown) is still great to me, but I need several Petree top yellows and it wouldn't hurt to have SUMMERTIME MAGIC and HEART STEALER, when available. This is a garden I would like to stroll through and pretend it was mine for awhile, and that I had created them all. So much for dreams.

Diploids are still my thing - you can work with the very best and latest or you can work with older known good parents and do well. I have seedlings I love from MY BELLE x JOLLY PINK GIANT and SABIE x FATSO which produce real large and fat ones. How about crossing these for ruffles - WYNNSON, SILOAM MAMA, and ONO? Pauline has large ones, also which I shall cross with BROCADED GOWN, ANNE FAGGARD, SUPER TRADITION, and EDNA HO HO. I have used SUGAR TIME, MOSES, and SUPER PURPLE and will cross with MOTOR MOUTH for size, and maybe MACMILLAN MEMORIAL. I have gobs of good large reds - a lot from Cruse. HOLY FIRE and some of my red seedlings will take care of reds. Pinks are still my favorites - also rose, lilac and lavenders. I love all of Pierce's, especially SURPRISINGLY PINK, BEVERLY ANN, and FAIRY TALE PINK. The best are planted in my new SUPER bed. I hope you will come by also if you like super daylilies in all colors. The last week in May starts it off, usually.



Lankart L-83-5 yellow

Photo by Edna Lankart

Joyce Lewis, Murchison,

I AM A HYBRIDIZER - Joyce Lewis

Then, I was old; now, I was young when I was first exposed to the fun of dabbing daylily pollen. Regardless of my age, I was newly married, just returned home from World War II and settling down to raising a family. My wife, Allyene, and I visited my aunt, Mrs. W. K. Carson, and lo and behold there was a garden full of offspring beauties from Hall, Taylor, Russell, Edna Spalding, MacMillan, Wheeler, Neva Alexander, and others, and seedlings of Mrs. Carson's own crossing. Her love, interest, and enthusiasm with the daylily became a part of me. "Big, bold, and vulgar" was her goal, the way she described it, but of course this went along with more substance, broader ruffled petals, more branching, etc. which all of the hybridizers were striving for.

My goal was to come up with a seedling bigger and prettier than any of hers, but I never succeeded. I was different in one respect from Mrs. Carson - it hurt my insides to see her throw over the fence everything that even resembled being small. I couldn't compete with her on the "bigger and better" angle, but switching to her small discards, my own line of miniatures was gradually being formed, and there was no competition in my own little world. I doubt that Mrs. Carson ever saw a miniature she liked, but until her death she shared her pollen and big beautiful blooms with me. My first few AHS memberships were birthday presents from her. Mrs. Carson's first daylilies were purchased from Hugh Russell when he was peddling daylilies door to door in Dallas. My first daylilies were gifts from Mrs. Carson's garden.

I didn't know I was a "hybridizer" until I sent a few "guest" plants to Natalie Thompson's garden for the 1977 Dallas National Convention. Dr. Virginia Winkler from Illinois saw LITTLE JOY, PARADISE PRINCESS, PARADISE PRINCE, and YUM YUM, and asked for my pricelist. I had none but she handed me a \$100 check and said, "Send me some!" It's still hard to think of myself as a "hybridizer" for it is still a beautiful hobby pastime with me.

I do collect 10,000-12,000 seeds each Summer, plant most of them, line them out if time permits and mostly end up with "survival of the fittest." I've always said, "If I ever get a good one, it will certainly be a tough one," and that holds true today as it always has. For my "Keepers," I do look for good branching, bud count, substance, etc., and even beauty of the bloom, but mostly, a keeper has to be distinctive; at least in my own mind I want it to be "different." I've been criticized for discarding the pretty ones and keeping only those that have good branching and bud count. Maybe I should cater more to this advice but my "goal" is still a long way from being reached. I'll continue introducing a few Hems to help subsidize my hobby each year and dab pollen for the future.

May I quote from the Journal of the Royal Horticultural Society on another plant species: "The enthusiastic breeder is always gazing into the future, and they probably get more real pleasure from their expectations than they do from their realization, no matter how successful they may be, for they set themselves an ideal, and should they attain that, they immediately set themselves a still higher one - in fact, they are ever pursuing that elusive will-o'-the-wisp, perfection." I think this applies to all serious hybridizers and, yes, even to those of us whom the American Hemerocallis Society refers to as backyard hobby hybridizers.

Mable Nelson, Port Neches, Texas

I started dabbling pollen like most all of us. I couldn't wait until the morning I saw my first seedling bloom. It was the most rewarding experience. I felt almost in partnership with our Creator, being the very first one to see a new creation.

This was the beginning of some new creations every year after. I really believe hybridizing is the most fun of all.

I have registered 5 cultivars of my own:

MAUVE MOMENTS, a lovely lavender-mauve.

MATINEE IDOL, a purple with a light midrib that makes it a stand-out in the garden.

PROM GOWN, a very crisp, light apricot, gently recurved with overlapping petals and sepals. Anne Faggard named this one, seeing it bloom in the seedling bed, saying, "I like that one, it looks just like a Spring Prom Gown!"

RUBY RED LIPS, a nice red with a ruby eyezone. This was well liked at our 1985 Regional Meeting in Beaumont.

ROYAL WELCOME, a magenta purple with a clear apple-green throat.

Two others I have registered:

SWEET SENSATION (Cruse-Nelson), a very fine nice cream with maroon eye -very striking. I won the Achievement Medal in 1981 for this one.

IMA MARIE, an exceptional, deep pink, 4 ½ - 5" of Charles Hegele's, who is deceased, and wanted this one named for his lovely wife.

This year I will register MAMA'S HOT CHOCOLATE, a brownish small flower that can be different each time it blooms. It was hybridized by my mother, Frances Lewis.

Last year I found a light red with a bright red eye, green throat, which bloomed 4 times for me this year. With her approval, I will name this one for my dear friend Allie Swafford, who also loves daylilies, especially red ones.

I have 3 good whites, one holds its petals straight up in an unusual manner. I have one from a cross of MATINEE IDOL x ROSE RUFFLING which I like. It looks like MATINEE IDOL, but more rose and more ruffles. N-GP-BE is a late bloomer that is a beige with a hint of rose and dark eye. These I hope to register in the near future, along with some good pinks. This year I have had several to show with different forms and twisted sepals. I believe these are called "variants."

So if you want a lot of fun, but also hard work, make your first daylily cross, and you are hooked. Like I always say, "DAYLILIES ARE NOT A HOBBY, BUT A WAY OF LIFE."



N-RRE-AS

Photo by Mable Nelson

Cora Offer, San Antonio, Texas

I started hybridizing in 1965, just for fun and to see what color variations I could get. I am still hybridizing just for fun. Lack of space is my problem.

Probably my most exciting cross was FUJIYAMA - ICE CARNIVAL x JULIA TANNER. I had several good seedlings, but I have not registered any of them.

I didn't hybridize from 1970 until 1985. I still have about 200 clumps of my own seedlings - 30 from 1985 crosses.

In picking discards from my seedling bed, I throw away those that do not have a striking color and are not healthy plants.

The traits in the "keepers" are: a good healthy plant, distinctive color, strong scape, good branching, and bud count.

One of my registrations that I think is distinctive is CHARMING SPIDER. It bloomed well for me this past season.

Some of my newer registrations are:

FUJIYAMA (1984) 29", MLaRe, 5 ½" pearly white brushed lavender, with chartreuse throat, semi-evergreen (ICE CARNIVAL x JULIA TANNER)

CORA'S BABE (1984) 24", M, 4 ½" lavender pink blend with green spot and chartreuse throat. Semi-evergreen. (COLOR FANTASY x BOURBON KINGS). She is slow to increase. It is different.

SAN ANTONIO AWARD (1984) 28", EMRe, 6" lavender-purple spider with washed fuchsia halo and chartreuse throat. Evergreen. (Seedling x BRAZOSPORT)

I do not sell commercially.



CHARMING SPIDER (Offer, 1973)
26", MLa, 7" salmon and melon
blend with green throat. Dormant.

Photo by Nell Crandall

Gene Orgeron, Port Arthur, Texas

About 12 years ago, I started hybridizing in a haphazard manner and strictly for fun. My goal now is to concentrate on improved reds.

My first registration was in 1985 which was named MOCKINGBIRD THRILL. It is a cross of SILOAM FRENCH LACE and a Monette seedling. This cross has been my most successful so far, producing MOCKINGBIRD THRILL, MING EMPRESS, plus an excellent gold seedling which unfortunately did not survive.

I grow about 200 seedlings yearly and they must be closely spaced and observed for only two years.

I discard a seedling the minute I see that it has a weak neck and can't hold up its head. Out it goes.

If a seedling has good form and good substance, I consider it worth keeping for further crossing or watching or registering.

I am registering a raspberry rose seedling as:

FRANCES BURKART, its parents are OLIVIER MONETTE and MOMENT OF TRUTH.

Two of my other 1985 introductions were:

FUTURE SHOCK, 16", EMRe, 6 ½" peach pink polychrome with yellow-green throat, evergreen.
(Seedling x CONTRIBUTION)

SPRING MASTERPIECE, 16", EM, 4 ½" light rose with dark rose eyezone and green throat
[(CONTRIBUTION x BRILLIANT LUSTER) x ROSELLA SHERIDAN]

MING EMPRESS is registered as 18", EMRe, 6" greenish yellow self with green throat, evergreen, fragrant.

MOCKINGBIRD THRILL is registered as 20", EMRe, 6" creamy yellow self with green throat, evergreen, fragrant.

I do not sell commercially.



FRANCES BURKHART

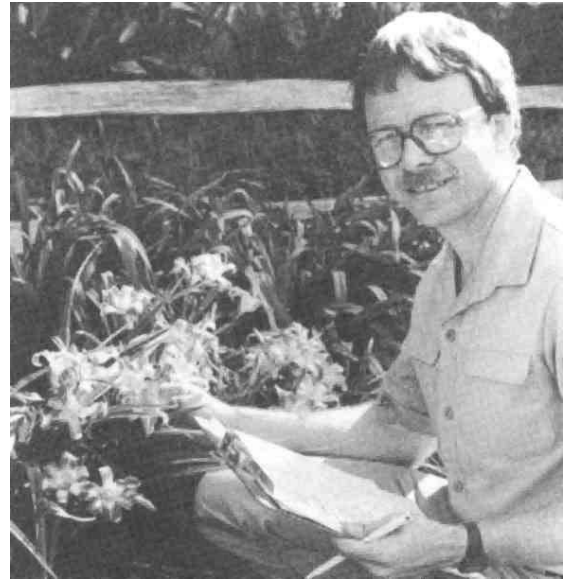
Photo by Gene Orgeron

Jack Roberson, The Woodlands, Texas

When I was a small child in rural Southeastern Oklahoma, I was fascinated by the beauty of daylilies growing in our yard. I started my horticultural pursuits at the age of 7 when some gourd seeds I planted bloomed. I hybridized gourds and created a new one.

During my college years, I worked in the West Texas cotton and Milo fields in the Summers to help support my study of Veterinary Medicine. Then, as my Veterinary practice developed, my one and only hobby was horticulture, consuming about 20 hours a week.

My first daylily purchase was MRS. B. F. BONNER (still a favorite), followed by GERTRUDE CONDON, FABULOUS FAVORITE, PEACH ICE, and BERTHA ELLA CONE. Today my breeding stock is a collection of very select cultivars. I like all types of quality daylilies and appreciate the unique beauty and dominant characteristics of a wide range of diversified cultivars.



I started hybridizing daylilies in 1970, and registered my first daylily in 1977. It was MORMON, a cross of HAWK x BERTHA ELLA CONE, an 8 ½" near-white self, low growing and evergreen. I think my most exciting cross has been CASHMERE x MORMON, which gave me HELAMAN and also MORMON SPIDER.

I grow 10-50,000 seedlings every year. To handle the space problem, I have bought more land, hired more help, and gone to automatic processing.

I will discard any seedling with poor-substance blooms, low bud count, and one that wilts early in the day. But I keep the seedlings that have unique color (or color combinations) and new form, and have hardy blooming traits in August, with high bud counts.

In the past 10 years, I have registered and introduced 52 cultivars. They have run the gamut from wide, round, ruffled, as well as some "spider" types to which I am partial. I also breed for fragrance with BROTHER OF JARED, HELAMAN, LAVENDER NEPHITE, and MORMON topping the list in this trait.

If I feel a deeper sense of fulfillment in any one area, it must be our Landscape Supreme Series. I have given this series special attention for such a long period of time and feel a sense of accomplishment as well as a continued challenge. I think that most people want a daylily that gives consistent long-term color, rapid clumping, high bud count, hardiness, and strong repeating genes.

Write and send \$3.00 to HOUSTON DAYLILY GARDENS, P.O. Box 7008, The Woodlands, TX 77383, for a copy of our new 1987 color catalog which will introduce our newest registrations.

Maggie Sheffield, Newton, Texas

Sheffield Gardens was begun in 1952, with fifty seedlings purchased from a lady in Louisiana. It now contains some of the newest and oldest named varieties, as well as many thousand seedlings.

The newest registered cultivar is MAGGIE DOCKENS SHEFFIELD (1986) by Henry Crowell, named for me.

Lucille Williamson also named her LITTLE MAGGIE for me.

I grow many hundreds of J. L. Cruse's named varieties and seedlings, many under number.

Probably my two favorites this year are Cruse's NEW BEGINNING and Tanner's SERENITY MORGAN.

I do put out a list of the plants I have, but not the price, as so many are for display only. If anyone is interested, I would be glad to mail a list. Write to:

Maggie Sheffield
Route 2, Box 268
Newton, Texas 75966

I am located 3 miles south of Roganville, Texas, and visitors are welcome.

Mildred Smith Hitchcock, Texas

HYBRIDIZER??? MILDRED SMITH???

You Got to be Kidding!!!

Crossing two daylilies to make a seed, then to see what blooms from that seed is the driving force behind some hybridizers. If you make too many seeds, it turns into a lot of work. They say that's healthy.

I play daylilies. I love 'em. It's true I have registered a few daylilies. And I intend to register others, none of them will be famous. The best daylily I've registered was OH YES. One of the parents was a beautiful yellow seedling from Spalding. The other parent was probably BESTELDA. I used to tag all the crosses, but the rain would ruin the tags, and it was a lot of work. So I quit that.

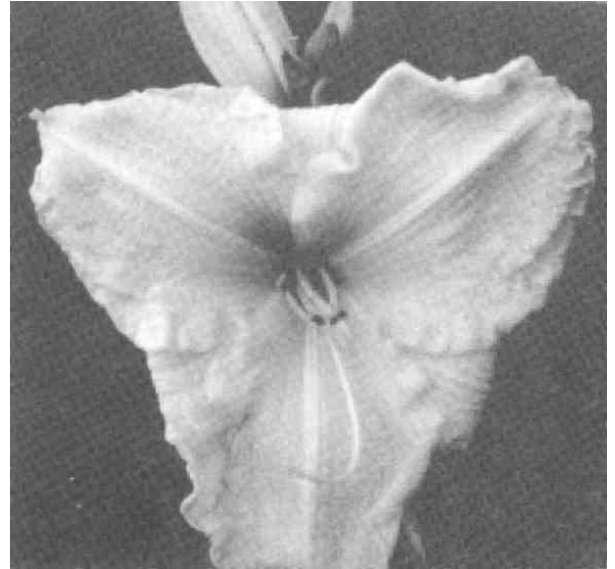
From a cross of OH YES and ONO, you will get a lot of seedlings that look almost like OH YES or ONO. They are all good. There is a seedling from this cross that we will name GOSH JOSH. It is better than either parent, in bud count, scape strength and rebloom qualities. Bloom substance is very important to me. Color and "character" of bloom is also important. I've discarded many excellent seedlings due to low bud count.

If that beautiful little plant can produce only 6 blooms a year, then it doesn't have a future in my garden. I do save their pictures, but I don't save them. It hurts.

The only thing I'm working on now is a cross toward blue. If I ever get a true blue with a bud count of only six, I promise you I'll save it. This past bloom season, Helen Collier brought to me pollen from BENCHMARK (Munson). I don't think you can have a better friend than one who brings pollen from her newest and most expensive cultivar. I love you, Helen!!!

The BENCHMARK seeds are the only ones in my seed patch this Fall. It will be two years before they bloom. Gosh! Let's have a flower show in 1988. I'd just love to show off my new almost blue seedling at a National Convention.

And that's what makes a hybridizer - it's chasing a GOAL. Adios, from Mildred Smith.



OH YES (1981)
28", EMRe, 6 ½" light yellow self,
green throat. Fragrant. Evergreen.

Photo by Nell Crandall

Inez Tarrant, Freeport, Texas

I began hybridizing in 1970. The first daylily I ever named was LIFE IS FRAGILE, and along with it were BOLD STREAKER and WIND FRILLS. I started hybridizing for fun, to see what I could come up with.

My hybridizing goal at the present time is to keep good bud count and good branching in my line, as well as to try to have a flower that is unique. I like something different, a flower you will recognize wherever you see it. Distinction is very important to me.

I really can't say which has been my best registered daylily so far, but I believe WIND FRILLS has received the most comments.

I grow about 1,000 seedlings each year, but then I have to be able to do something with a lot of plants, and space is a big problem for me. When I walk down my rows of seedlings, the traits that cause me to discard them are: ugly flower, weak scapes, no bud count, and if they look so much like some others that have already been introduced.

The ones I keep for further crossing or to watch have clear color, good bud count, hold well in the sun and wind, and are unique and different as well as pretty.

I have some 1986 registrations that you will be able to see my garden in 1987 at the Region 6 Meeting. They are:

1. IT-2-86 Mauve rose, 6" flower, 20" tall. To be named DIAMOND ROSE
2. IT-3-86 Coral Pink, 5" to 6" flower. To be named GRANNIE OWEN, for my mother.
3. IT-47-86 Most unusual, violet purple bitone, 5 1/2" flower with 2 1/2" petals and 1 7/8" sepals. To be named LOIS HALL.

I sell commercially, and I put out a catalog which I will send to anyone upon request.

I am looking forward to having you visit my garden next year, so come on down.



LOIS HALL

Photo by Inez Tarrant

Lucille Warner, Dallas, Texas

A BIT ABOUT HEM'D INN

We bought our first collection of daylilies from Russell Gardens in 1953. At that time I grew a collection of Roses, Iris, Chrysanthemums, and Daffodils. Gradually, all space went to daylilies. I was a charter member of the first Hemerocallis Society in Dallas, a member of AHS in 1956, attended my first National Convention in Tulsa in 1957, became an Awards & Honors Judge in 1958, and an Exhibition Judge in 1959.

At first it was enough to be a "collector." Then, with the encouragement of my family and friends, I started hybridizing in 1960, and BITSY was in the first crop of seedlings, blooming the first year from seed in 1961. Seedling #61-14. Miniature breeding has never represented more than 25% of my hybridizing program, but the miniatures have received most of the attention.

BITSY, FAWN, MATTIE MAE BERRY, PIZZA, and SWEETIE FACE are widely grown in the U.S., and especially in Region 6. We are pleased that almost all of them do well in all parts of the country.

Many years ago we discovered that our son and I are violently allergic to insecticide, and we perform became organic gardeners.

At the Chicago Convention in 1961, I fell in love with tetraploids, and with the gracious help of Orville Fay, Robert Griesbach, Brother Charles Reckamp, and Clarence Blocher, I began a tetraploid program. From 1966 to the present time, we have treated either by clonal treatment or embryo treatment, many thousands of diploids. Because I had trouble setting seed on tetraploid daylilies, our first priority in selecting diploids for treatment - was fertility.

In the colchicine treatment of diploids, I concentrated mainly on our own seedlings and those of W. B. MacMillan, Edna Spalding, Hughes Garden, and the Wilds. I was looking for beauty, fertility, rebloom, and oh! so many attributes.

There have been many we have been pleased with: ANGEL BAND, ATMOSPHERE, AVILDA, BONUS, BONUS BABY, DEWEY ROQUEMORE, DOLL, HOT STUFF, JAY, JONELLE, JOHN BARR, JOHN WARNER, LIGHT WONDER, LOREE MEAGHER, MAMA CHA CHA, ROBERT MILLER MEMORIAL, SHOTGUN, SMALL PRIZE, SUGAR SWEET, SUSAN WARNER, SWAPSHOP, SWEET PATOOTIE, TENDER MERCIES, and TEXAS DANCING.

Perhaps we are most pleased of all with HOT STUFF, not only for its fertility, but for its ability to throw two scapes per division, and to have the ability to pass this on to its progeny. It has turned up in CINNAMON STUFF, SMALL STUFF, WEE STUFF, and a new introduction for 1987 ANGEL STUFF.

Last Sunday night the minister preached on "Creative Dissatisfaction" and that it must be a part of an "achiever," in every day life and spiritually. Well, it's a part of the hybridizer. There is always Winter to plan your crosses, and Summer to enjoy them, and Fall, the back-breaking work of starting anew.

Jay retired in September. He has always been an important part of our garden. It is going to be great to have more input from him on evaluating, selecting, and just the fun of sharing the bloom each day. Remember!

THE WELCOME MAT IS ALWAYS OUT AT HEM'D INN

Lucille Williamson

A HYBRIDIZER TO BE PROUD OF

Written by Edna Lankart, Tyler, Texas

I have never known a hybridizer that could get more excited showing you her seedling patch, and well she should get excited as many beauties have come from her garden. She has won more awards and she certainly holds the Region 6 record for receiving the most medals, and that is what separates the great from the mediocre.

I am writing this about my friend Lucy because, as most of you know, she is in a nursing home and is unable to carry on with her work. Those of you who liked her daylilies can visit Jean Barnhart at Nacogdoches as she has purchased Lucy's stock.

Lucy was what you might say "way ahead of her time." She had so many very good miniatures and small-flowered or "ponies" as she called them. A good hybridizer is not known by the many daylilies they introduce but how long they stay popular. I know of so many of her miniatures that are used in hybridizing programs, so they must have been good. Among these are LITTLE IDY and LITTLE CELENA, and who could forget LITTLE GRAPETTE which to me is still tops and perfection. I have a whole border of this and her GREEN FLUTTER. GREEN FLUTTER has been used in hybridizing and both of the latter were top medal winners. GREEN FLUTTER was one parent of my GROOVY GREEN and does a lot to "green up" your crosses.

Her first love seemed to be the miniatures - in all colors and all patterns with many blooms and low growers. Her aim was to improve the colors and form of these, and she certainly did. She had to build her own line here as there were very few better when she started.

Later, when better daylilies were available, she started working more on the larger sizes - here again she looked for color and form. She had many unusual eyezone patterns that were exciting. Her main aim was for large yellows and good pinks, and if she had only MAMIE SCHULZE, it would all have been worthwhile as she was way ahead of her time in getting this very ruffled diploid. It is still popular and well liked wherever seen. I would not do without it and you will know why when you see this picture of it taken in my garden.

We are all sorry Lucy cannot carry on her work that she loved so well, but we can still see it in many gardens, and particularly in Jean Barnhart's garden where the hybridizing program will continue.

The last daylily that Lucy registered was named after me. It is called FLIRTY EDNA (1981) a yellow with a maroon eyezone.



MAMIE SCHULZE (1974)
24", E, 5 ½" peach pink blend with
yellow and pink throat. Evergreen.

Photo by Edna Lankart

Ury Winniford, Dallas, Texas

Interviewed by Gene Koonce, Richardson, Texas

I began hybridizing in 1960. For twenty-five years before that, I hybridized Iris. My first registrations were in 1968, and they were LADY WITH DISTINCTION, CANDELABRUM DAYBREAK, PRECIOUS LADY, NOBLE PRINCE, and TWENTYFOUR KARAT (the latter is one of the parents of TOUCHED BY MIDAS).

I began because I love the flower and want to see what I can do for this flower. Too many people are trying to see what the flower can do for them. I try to visualize and improve on the best characteristics of each daylily I cross, whether it is branching, color, whatever.

My start came from the Russell and Hughes gardens.

CLARICE FOSTER was the result of my most exciting cross. It is a pastel blend. I have several good cultivars from this parent. One has been registered as REGION SIX and one is IDA MOORE. There are several more under number I am still watching.

This year I will plant approximately 10,000 seedlings. I will need another acre or two. I even plant some seedlings in pots.

Two traits in a daylily that would cause me to discard it immediately are: if it is just like its parents and if it has narrow sepals. I don't like narrow sepals. I would like the sepals so wide, the bloom would hold water.

Seedlings I decide to keep must have good substance of bloom, good branching, and WIDE sepals.

In 1986, I registered approximately 50 cultivars. Probably the best one is IDA MOORE, which is a creamy blend.

I do not put out a pricelist.

(Editor's Note: The Bertrand Farr Medal has been given each year since 1950 by the American Hemerocallis Society to a member who has attained outstanding results in the field of hybridizing. Only three Region 6 members have won this award: Hugh Russell in 1958, Lucille Williamson in 1978, and Ury G. Winniford in 1983.)



In Memoriam



RUDOLPH A. FUCHS 1905 - 1985
By Marie Caillet, Little Elm, Texas, August 1986

We were all saddened by the death of Rudolph Fuchs (pronounced "Fox") in the Summer of 1985 at his home in Denton, Texas. His family remember him as their favorite brother and uncle in whose home they often gathered. His former students and co-workers at North Texas State University remember him as a dedicated art and weaving teacher and their friend. Daylily people remember his yard full of hundreds of varieties of daylilies and his contributions to their group. Iris growers remember him as always being at the National Conventions and seeming to know everyone. All of us remember his good humor, his spontaneous piano playing, and the hospitality of his home. Rudi had more friends than most people make in a lifetime. These were people he kept up with and corresponded with on a regular basis. His Christmas card list numbered 500 to 600 people and these were cards he designed, wove, and made himself, then he addressed and wrote a personal note in each.

Rudi's garden came into bloom in early Spring with flowering shrubs and Daffodils, followed by months of many types of Irises in bloom, then the wildflowers and daylilies. Later there were annuals to bloom and then Chrysanthemums. In the Winter he brought in the potted plants from his patio to line the 50-foot glass wall of his living room. Rudi was not a botanist nor a hybridizer and he rarely entered his flowers in shows. He grew plants and flowers because he enjoyed working in the soil and liked to see things grow and bloom. His vast collection of plants made his yard of several acres like a botanical or display garden with hundreds of new varieties of Irises and daylilies added each year. Not wanting to dispose of old favorites, he moved them to the back to make way for the new. These were left to grow into big clumps of color or were lined out to give away.

He attended Conventions and toured gardens to see what he wanted to order. He often bought new introductions because he knew the hybridizers and did not want to slight them. It was not unusual for him to order and plant as many as 100 newly introduced varieties in a year. Commercial growers and hybridizers of Irises and daylilies gave him good "extras" for he was a good customer and the blooms were sure to be seen by hundreds of growers. His garden was always open to visitors and even strangers, driving along the street to look, usually parked and walked in. Most of the time Rudi could be found working in the garden - checking the bloom to record in his file, cleaning up leaves and stalks on clumps or on his knees pulling weeds. He refused to hire yard help, saying it would no longer be a hobby if he did not do the work himself. He never sold plants; sometimes he traded them but usually he gave them away.

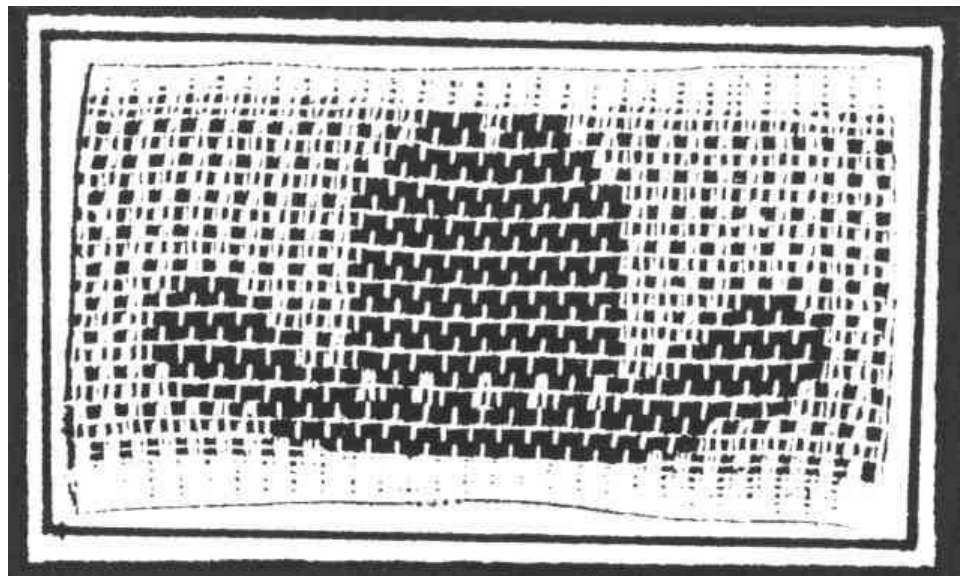
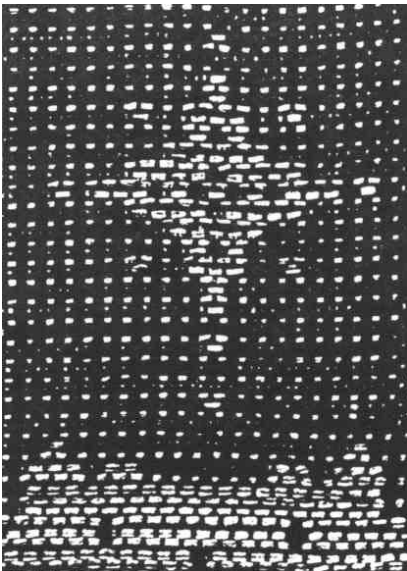
One wonders how someone can tend such a large garden and for this to be only one of many hobbies. Rudi was an accomplished pianist and played for his own entertainment as well as for many parties, meetings, and public functions. He played with a dance band, the Golden Eagles, a group of older men who had played together off and on for over 50 years. Much of their playing was done free, such as for dances for the Senior Citizens in Denton. He had an excellent collection of records and sheet music that ranked as real collectors items, much of it going back to the early part of this century.

Rudi's teaching major at the University was also a lifetime hobby. He kept several looms threaded and worked at them whenever he found time, making bedspreads and draperies for his home, and wall hangings and gifts for his family and friends. He wrote articles on weaving, advised other weavers, judged weaving exhibits at art and craft shows, and served as an officer in the Hand Weavers Guild of America for many years.

Rudi was a graduate of West Texas State University and Columbia University and did additional work at several design and weaving schools in Europe and the United States. He served in the Army from 1942 to 1946. When he retired from teaching in 1972, he changed from a paid worker to a volunteer. He was active in many organizations dealing with art, music, weaving, and flower growing. He held offices in the Dallas and Fort Worth Iris and Daylily Societies and in the Men's Garden Club in Denton. He kept a calendar marked with appointments and few days were ever blank.

There have been numerous newspaper and magazine articles written about Rudi and his accomplishments. Walter Moore, formerly of Fort Worth, named a tall Bearded Iris "Rudi" in 1985. An Iris garden in New Mexico, "Rancho de la Flor de Lis" operated by Julian Wells and Larry Anaya, has a special garden dedicated to Rudolph Fuchs. It contains over 800 Irises Rudi gave to the garden. After his death, 200 of his most recent Iris acquisitions were donated by his family through the Iris Society of Dallas to the Dallas Arboretum and Botanical Garden for a special planting in his memory. A scholarship has also been set up in his memory to be given to a Dallas area high school graduate for the study of horticulture at a university of their choice. The fund is administered by the American Iris Society Foundation.

Rudolph Fuchs left a legacy of good fellowship, kindness, and generosity to everyone and enjoyment of life to the fullest. He will be missed by many but never forgotten by his multitude of friends.



Examples of two of Rudi's woven Christmas Cards



In Memoriam



FRANCES BURKHART
By Frances Choate, Port Arthur, Texas

The Gulf Coast Daylily Society lost a dear friend and valued member, when Frances Burkhart died July 22, 1986, of a heart attack, which followed a stroke.

Frances joined the Gulf Coast Hemerocallis Society on June 20, 1963. She was an active member and officer - 6 years as Recording Secretary, and 12 years as Treasurer. She was Treasurer when she died.

Survivors include a daughter, Ann and son-in-law, Gene Marks, both active in local, Regional, and National events; one grandson, Scott; and one granddaughter, Sherry.

Our sympathy goes to these loved ones and friends.

ANEL M. UNGER

Anel Merton Unger died on June 29, 1986 at the age of 85. He was born in West Point, Mississippi and graduated from the University of Mississippi. After graduation, he made his home in Houston and worked for Exxon.

He was an avid daylily hybridizer, and among his well known introductions are: ART EXHIBIT, MAY UNGER, and SANDRA HUGHES.

Guest Plants for National Convention - 1988

As most of you know, Houston will be the host city for the 1988 National Convention. Tour gardens are filling up with guest plants from many parts of the country, and it is looking very, very interesting! People who wish to have guest plants grown in the Tour Gardens in 1988 should contact the Guest Plant Chairman:

Mr. Paul D. Carter
516 Julia
Houston, Texas 77022
Ph. (713) 697-2357

Mr. Carter has requested all those persons who have a preference as to the Tour Garden to send their daylilies to that garden, but to please contact the owner beforehand to see if there is still space. All other plants should go directly to Mr. Carter and he will see that they are placed in a Tour Garden. The Tour Gardens are as follows, and you will note that two gardens have been added since our Summer 1986 issue of the Newsletter:

Mr. and Mrs. Bill Baker, 12354 Honeywood Trail, Houston, Texas 77077

Mr. and Mrs. Gene Childers, 23614 Megan, Spring, TX 77373

Mr. and Mrs. John Crandall, 721 Ourlane Circle, Houston, TX 77024

*Mr. and Mrs. Jerry Dowdy, P.O. Box 324, Fulshear, Texas 77441

Mrs. Anna Rosa Glidden, 714 Benbrook, Houston, TX 77076

Mr. and Mrs. J. D. Oglesby, 11545 South Lou-al, Houston, TX 77024

Mr. and Mrs. Jeff Stagg, 17011 N. Bear Creek Drive, Houston, TX 77084

The Houston Daylily Gardens, P.O. Box 7008, The Woodlands, TX 77380

* Mr. Bill Reeves is doing the landscaping for Mr. and Mrs. Dowdy. Please check with Bill Reeves before sending plants to this garden. His address is Box 508, Fulshear, TX 77441, Ph. (713) 346-1194

ANSWERS TO PUZZLE IN 1986 SUMMER NEWSLETTER

- | | | |
|--------------------|-------------------------|-------------------|
| 1. REFLECTED LIGHT | 8. DOUBLE OVERTIME | 15. IN LOVE AGAIN |
| 2. COUNTY DOWN | 9. MIDWEST GLORY | 16. TUTU |
| 3. TOTAL ECLIPSE | 10. LONG JUMP | 17. WALTZ TIME |
| 4. UPWARD CALL | 11. TOO BIG | 18. HIGH ENERGY |
| 5. GOOD STANDING | 12. FATSO | 19. NEON LIGHT |
| 6. TIME AFTER TIME | 13. WIDE ACCLAIM | 20. ENDLESS LOVE |
| 7. MIXED EMOTIONS | 14. UNFINISHED BUSINESS | |



**1987 REGION 6 MEETING
BRAZOSPORT , MAY 21- 23**

It's time to start making your plans to join us in Brazosport for the 1987 Regional Meeting.

We are excited about hosting the Regional and have been working diligently for your pleasure, comfort, and, of course, FUN!

Registration begins at 12:00 on Thursday, May 21. The first activity will be an Exhibition Judges Clinic at 2:00 p.m. Then we will head for the beach for FUN, hot dogs, and more FUN.

We will begin bright and early Friday morning with breakfast in my garden. Next we will tour two other gardens - those of Naomi Carwile and R. K. and Polly Smith. For lunch, we will serve a Texas-style barbeque at the Lake Jackson Farms Park. Next it's back to the hotel for an afternoon rest time before we start the FUN again with an informal banquet at the indoor pool. Following the banquet we will see a slide presentation followed by the Region 6 Auction.

On Saturday, we tour the gardens of Mel and JoAnn Park (JoAnn is our Regional Meeting Chairman), Ray and Mary Houston, and Floyd and Inez Tarrant and son Edgar. Next, for your dining pleasure, we will have a luncheon buffet at Bridge Harbor Marina and Yacht Club. Following an afternoon rest time, we will host the Region 6 Awards Banquet at Riverside Country Club.

There will be a hospitality room open during the Regional for visiting and FUN, so please don't go to your room and sit by yourself - come on down and make new friends, visit, and have FUN. It will be located near the pool.

ATTENTION ALL YOUTH - The Brazosport Daylily Society extends a special invitation to you to join us for these three days of FUN. To help you do this, we will pay your registration fee, provided that you pre-register. We will have a youth meeting on Saturday afternoon plus FUN on the beach on Thursday. We want YOU here!

Now, is everyone ready? IF you send your registration in early there will be a special handmade surprise included in your registration packet. Bring your dollars to buy chances for our two raffle items - a gorgeous Daylily Quilt (made by the Brazosport Daylily Society with squares hand-painted by Rena Humphreys) and a beautiful original painting by Rena Humphreys.

Send in your registration early so we can provide a better Regional for you - after all, I need to know how many eggs my chickens need to lay for your Friday morning breakfast!

See you May 21st in Brazosport!

Love & Hugs,

Patsy Lepper



**OFFICIAL REGISTRATION FORM
 REGION 6 AMERICAN HEMEROCALLIS SOCIETY MEETING
 MAY 21-23, 1987
 HILTON INN - BRAZOSPORT, HWY. 332
 LAKE JACKSON, TEXAS**

NAME(s): _____

 (as you wish shown on name badge)
 YOUTH: _____
 ADDRESS: _____

REGISTRATION FEE POLICY

\$65.00 per person if received on or before May 7, 1987
 \$75.00 per person if received after May 7, 1987
 YOUTH - Free - Must Pre-Register
 No Refunds After May 7, 1987

OPTIONAL - Hot dog picnic at historic Quintana beach Thursday evening May 21, 1987. Cost \$7.50 Per Person (Includes Transportation)
 REGISTRATION FEE \$ _____
 HOT DOG PICNIC \$ _____
 TOTAL \$ _____

Make Checks Payable to Brazosport Daylily Society and Mail to:
 Edgar L. Tarrant
 Rt. 1, 7135 Hwy. 36
 Freeport, Texas 77541

I/We Shall attend the Judges' Clinic, Thursday, May 21, 1987 at 2:00 p.m.
 Number Attending the Clinic will be _____ (Fee Payable at Clinic)

OFFICIAL HOTEL RESERVATION FORM

Brazosport Hilton Inn
 925 Hwy 332 West
 Lake Jackson, Texas 77566
 Phone (409) 297-1161
 Hilton Inn Reservation Service
 1-800-445-8667

Reservations Received after May 16, 1987 will be accepted on a space available basis.
 American Hemerocallis Society/Region 6
 May 21 - 24, 1987

Name _____ Phone _____
 Address _____ Zip _____
 Will arrive _____ Will depart _____ Hold for 6:00 p.m. arrival _____
 Deposit or credit card required.

Please reserve _____ Room (s) for _____ person (s)
 Single (1 bed): _____ Dbl. (1 bed): _____ Twin (2 double beds): _____
Weekend Rate: \$29.95 Thursday Rate only \$41.00 Names of person(s)
 (All Rooms One Price)
 American Express # _____ Exp. ____ / ____ _____
 Diner's Club # _____ Exp. ____ / ____ _____

**REGION 13 ANNUAL MEETING
AMERICAN HEMEROCALLIS SOCIETY
SOUTHWEST LOUISIANA, SULPHUR, LA
May 28-30, 1987**

Thursday, May 28, 1987

Registration - Sheraton Chateau Charles Inn
Creole Nature Trail
Exhibition Judges Clinic - Sheraton Chateau Charles
Table Sales - Daylilies & Crafts

Friday, May 29, 1987

Jerry Guillory's in Fenton, LA - Continental Breakfast
Spalding Garden in Iowa
Sheraton Chateau Charles Inn
Lunch - Sheraton Chateau Charles Inn
Portie's Garden - Sulphur
Vincent Garden - Sulphur
Franklin Garden - Sulphur
Mires & Nail Gardens - Sulphur
Strozier Garden
Back to Hotel
Table Sales
Reception - No Host - Sheraton Chateau Charles
Region 13 Meeting
Buffet - Sheraton Chateau Charles

Saturday, May 30, 1987

Brown's - Orange, Texas
Continental Breakfast at Brown's
Carlyss Oaks Daylily Garden, Carlyss, LA
Joe Boudreaux
China Garden, Lake Charles
Lunch
Hotel - Sheraton Chateau Charles
Plant Auction - Sheraton Chateau Charles
Reception - No Host - Sheraton Chateau Charles
Awards Banquet - Seafood Buffet - Sheraton Chateau Charles

Registration: \$50 fee for all

Mrs. Eula Portie (Sweetpea)
1309 Maria Drive
Sulphur, LA 70663

Single Day Registration: \$30
After May 1, 1987 - \$35
After May 1, 1987 - All Events - \$65

Housing form will be sent on receipt of registration
Headquarters Hotel: SHERATON CHATEAU CHARLES
I-10 West & Highway 90
2900 Highway 90 West
Westlake, LA 70669
Phone: 318 - 882-6130

Single Room - \$38 + 8% tax
Up to 4 - \$43 + 8% tax

Limousine service from Lake Charles Airport

A fee of \$3.00 is charged to register for the Exhibition Judges Clinic scheduled for 2:00 p.m., Thursday, May 28.

New Members - Welcome

We have added 47 new members to Region 6 since the Summer 1986 Newsletter was published. Daylilies must be doing something right!

If any of the new members live near you, please invite them to your meetings or send them a note of welcome.

Blanche Atchly
123 Shumaker Drive
New Boston, Texas 75574

Homer Harper
1740 Old Port Isabel Road
Brownsville, Texas 78521

Lanell Mersiovsky
Route 2, Box 151
Troy, Texas 76579

Laverne Sewell
2400 Bluffview
Arlington, Texas 76011

C. Robert Boone, M.D.
520 Blossom Street
Webster, Texas 77598

Dwain Hearn
P.O. Box 767
Paris, Texas 75460

Homer E. Morris
1901 N. Avenue G
Freeport, Texas 77541

Tamara L. Shelby
7215 Airport Blvd.
Houston, Texas 77061

Jo Ann Bridge
3202 Riley Fuzzell
Spring, Texas 77386-2812

Harvey E. Holland
1300 Oak Shadows Circle
Austin, Texas 78758

Hal S. Mulcahy
3511 Drummond
Houston, Texas 77025

Mrs. H. A. Shepherd
4151 Erby
Houston, Texas 77087

Ann J. Buckingham
7115 Schiller
Houston, Texas 77055

Leroy Horton
9203 Shoal Creek
Houston, Texas 77064

Kermit A. Muske
2122 Chantilly Lane
Houston, Texas 77018

Lavada Tarrant
P.O. Box 215
Fransdon, Texas 75763

Pat Bush
Route 1, Box 143
West Point, Texas 78963

Donald L. Howell
c/o Vinson & Elkins
2835 First City Tower
Houston, Texas 77002-6760

George E. Noble
14508 Sandy Side Drive
Austin, Texas 78728

Joe Tullier
Earline Tullier
3515 Avenue H
Nederland, Texas 77627

Marie Caillet
1216 Cedar Pine Lane
Little Elm, Texas 75068

W. T. Johnson
Box 225
Broadus, Texas 75929

Noel Ogburn
Route 10, Box 686
Orange, Texas 77630

Robert Wacaser
3406 Ivandell
Dallas, Texas 75211

Sylvester H. Clark
625 Brunos Curve
Kerrville, Texas 78028

Sue Kapner
8426 Bird Meadow Lane
Missouri City, Texas 77489

David E. Otahal
P.O. Box 890601
Houston, Texas 77289-0601

Mrs. Jack White
421 Brazos Hill Lane
Sealy, Texas 77474

W. George Erck, Jr.
114 St. Marks Street
Sugar Land, Texas 77478

Toye Long
3123 Steveroy Drive
La Marque, Texas 77568

Paul E. Parker
1709 N. 6th Street
McAllen, Texas 78501

Karen A. White
3911 Ranch Estates Drive
Plano, Texas 75074

Juanita Florence
P. O. Box 367
La Marque, Texas 77568

Laurel E. McDuffie
5789 Indian Springs
Livingston, Texas 77351

Jo Carmen Patterson
P.O. Box 783
Kingsland, Texas 78639

Jewell Wiggins
3810 Detroit
Beaumont, Texas 77703

Judith E. Francis
Route 3, Box 3088
Cleveland, Texas 77327

Peggy McGuire
2408 Colonial Court
Richardson, Texas 75081-1424

Cora Sue Paulk
2121 WSW Loop 323
Tyler, Texas 75701

Peggy Williams
3136 N. Haltom Road
Ft. Worth, Texas 76117

Mrs. B. W. Harden
2204 Santa Monica Avenue
Odessa, Texas 79763

Mrs. James P. Marlowe
2054 Ravenswood Road, PP
Granbury, Texas 76048

Mrs. L. A. Pickering
1500 Spur
Odessa, Texas 79761

Pamela R. Wright
503 Oak Drive
Friendswood, Texas 77546

Dorothy Hargis
1833 E. 49th
Odessa, Texas 79762

Thomas Weldon Martin
Nelma Lee Martin
Route 4, Box 102
Alvin, Texas 77511

Letters to the RVP and the RPD



Shy Osborn writes from Clyde, Texas: I have been concentrating on "lates" to extend the blooming period, and have ordered CATCH ME, CHROME PINK, DUKE OF DURHAM, GOLDEN PRIZE, and PRETTY PASTEL. Then I went to the other extreme and ordered "Extra Earlies": DOUBLE SUPREME, FRENCH GIRL, HOLY SPIRIT, LINDA GUIDRY, SWEET APRICOT, and TINY TIKI. (October 6)

Sarah Sikes writes from Luverne, Alabama: Spiders are getting to me, too. This year MYNELLE'S STARFISH was a knockout (though not really a spider?) I crossed it with GREEN WIDOW (I only have 3 spiders in my whole garden) and got seeds - 2 pods, and there's nothing like having a spider bloom in your seedling patch to turn one into a spider lover: Also, Jim Terry's HEAVENLY PROMISE (an oldie I had sort of tolerated all these years) was stunning. (October 6)

Edna Lankart writes from Tyler, Texas: With all my super new additions this Fall and those I can't do without, I may work myself to death crossing them. I crossed so many this year that I was wishing we had not sold fifty acres of our farm so I could plant them all. Jean Barnhart has told me she has now bought all Bob Dove's stock, so with this and Lucille Williamson's stock, she will be up to her neck in daylilies and has so far done all of the work. To have more space for the best, she gave hundreds away to homes for the retarded and others all over Texas. This will be one garden you will all want to see. Glad she is fairly close to me. (September 15)

Mildred Smith writes from Hitchcock, Texas: I have lined out a good many of the tetraploids, and am applying BAP Lanolin paste to all cuts, because I see it really stimulated MERLE KENT into throwing 3 new shoots after I had dug into it and cut it. (October 19)

Richard Rosen writes from Austin, Texas: I am writing regarding the scheduling of our Regional Meetings. This year in Austin (my first) it was scheduled for a Thursday, Friday, Saturday, and next year Brazosport again has it scheduled for a Thursday, Friday, Saturday. Having the Regional scheduled for two week days presents a problem for my wife and I, that I think is fairly typical for our age group. We are both in our early 30s and work a regular 5-day work week. We cannot afford to take two vacation days to attend a Regional Meeting. This year in Austin, I worked as much as I could to support the Austin Hemerocallis Society, but I wasn't able to help with the show, or attend the Friday garden tour. What I was able to attend I enjoyed very much. If you schedule future Regional Meetings for Friday-Sunday or Saturday-Monday, I will make every effort to attend. I had several friends who wanted to see the flower show, but couldn't get off work to go. If the show had been on Saturday they would have been there. (August 22)

Personals

Clarice Foster of Conroe has completed her two-year course in landscape design at Texas A&M, and received her certificate as a "Landscape Design Critic."

* * * * *

Gertrude Lanham, Dallas went to Glorieta, NM, in August to a college reunion at old Montezuma Baptist College, now called Armand Hammer World College of the Southwest. People from over 70 countries attend this college now.

* * * * *

Margaret Kane, of San Antonio, made her first trip to the Hawaiian Islands this past Summer, including, of course Kauai, the "Garden Isle."

* * * * *

Lucia Bjorkman says they are getting settled in Hot Springs, Arkansas and getting plans drawn to build a house on the new lake on a 1-acre lot covered with tall trees. She entered her garden club's show this year and came away with the top award for her blooming "Crown of Thorns," and also won Sweepstakes.

* * * * *

Grace and J. D. Alexander sold their home in Galveston. Their new address is P.O. Box 223, Mountain Home, TX 78053

Jean Barnhart of Nacogdoches has donated a bed of up-to-date miniature daylilies to Hodges Gardens, located between Many and Leesville, LA. She and Delores Jones will deliver and help plant them on November 8.

* * * * *

Lucille Warner's sister in Oklahoma died toward the end of October, and we send our sympathy to Lucille and Jay.

* * * * *

Marvin Granger of Lake Charles, LA, along with Elaine Nail, Norma and Chesley Gregory, and Sammy Nichols drove to Alaska. They left

Sulphur, LA, on July 7 going through Texas, New Mexico, Colorado, Wyoming, Montana, into Canada thru Alberta, British Columbia and Yukon. They followed the Alaskan Highway only part of the way so they could swing back through the Canadian Rockies to Lake Louise, Banff, and the Ice Fields, entering the U.S. through Idaho and visiting Yellowstone Park, Jackson Hole, the Tetons, Grand Canyon, Painted Desert, and Petrified Forest. They arrived home on August 8, after traveling 11,000 miles.



Marvin Granger and Elaine Nail

SPECIAL SALE

GLEBER'S DAYLILY GARDEN

LOCATED
9 miles N. E. of
Hammond, LA
On Highway 443

Telephone: (504) 878-9214

FRANK GLEBER
P.O. Box 590
Loranger, LA 70446

Fall 1986

Plants are state inspected and weather permitting are shipped promptly, unless specified otherwise, by PRIORITY MAIL. All plants are guaranteed to be healthy, freshly dug and labeled correctly. If you are not pleased with the plants when they arrive, DO NOT PLANT. Return them with the original labels for a full refund.

No substitutions will be made unless requested, however if allowed to substitute, greater value will be given. Include full payment (check or money order) with order. Add \$3.25 for postage.

1986 Introductions:

CLAYTON JERAD - A light purple with a darker eyezone. This one is an eye-catcher. The blooms are 4" and have a round form, good substance, pretty green throat, and hold well in the sun. It is an early bloomer with 20 " scapes, repeats, and is an evergreen..... \$25.00

ROSE FRILLY DILLY - This one has more ruffles and buds than you could ever imagine. It is a pretty 5 1/2" rose pink, slightly deeper eyezone with a green throat, excellent substance, blooms early and repeats several times in a season and is an evergreen with 26" scapes..... \$35.00

SONYA DENISE - A 6 1/2" light rose with a slightly deeper halo, has 20" scapes and a green throat. It repeats and is evergreen. This one is named for my niece \$25.00

1985 Introduction:

MY EYE ELSIE - The 5 1/2" blooms are peachy pink with a raspberry eye, fragrant, heavy substance, round, full form, and ruffled. The scapes are 24" tall with multiple branching and good bud count. An eye-catcher and stays open late into the night \$30.00

GENERAL LISTING

***Denotes tetraploid**

*APOLLODORUS (Munson) 28", MLaRe, 4 1/2" violet purple self, cream throat, EV.....	\$ 40.00
APPLE CRISP (Guidry) 25", EMRe, 6" copper red bitone, green throat, fragrant, DOR.....	15.00
ATTRIBUTION (Spalding) 24", EM, 7 1/4" rose pink, rose eyezone, EV.....	5.00
BESSIE KAY (Spalding, 1984) 14", M, 5" baby pink, green throat, EV.....	20.00
BLUE HAPPINESS (Spalding) 21", E, 7" ruffled dusty rose, green throat, SEV.....	10.00
BRENT GABRIEL (Guidry) 20", EERe, 5 1/2" purple bitone, green throat, EV. Dor.	30.00
BRILLIANT FORCAST (Spalding) 18", M, 4 3/4" yellow, green throat, Ev.....	20.00
BUTTER YELLOW (Monette) 26", EM, 7" bright yellow, green throat, Ev.....	2.50
CASSIE (Spalding) 17", M, 6" deep rose self, green throat, EV.	14.00
CHUBBY LAD (Spalding, 1984) 18", M, 4 1/2" yellow, green throat, EV.....	30.00
CLAYTON JERAD (Gleber, 1986) 20", EMRe, 4" light purple, green throat, SEV.....	25.00
COCONUT SURPRISE (Guidry) 24", EERe, 5" pale yellow, green throat, Ev.....	10.00
COLT (Durio) 20", EMRe, 4" lavender and near white bicolor, green throat, SEV.....	5.00
DOUBLE SUNRISE (Guidry) 22", EERe, 5 1/2" yr. gold, green throat, ext. EV.....	30.00
DOUGLAS POTTER (Mayfield) 24", EM, 4 1/2" sunfast red, green throat, SEV.....	5.00
DREAM AWHILE (E. Brown) 23", EM, 5 1/2" pink, green throat, SEV.....	25.00
DUTCH LADY (Spalding) 17", EM, 7" yellow, green throat, SEV.....	5.00
ELVIS ROCK KING (Spalding-Guillory) 17", M, 6 3/4" yellow, green throat, Ev.	50.00
FABULOUS FAVORITE (Lankart) 26", EM, raspberry red, green throat, SEV.....	6.00
FEMME DE JOIE (Hayward) 18", EM, 6 1/2" rose, cream blend, DOR.....	10.00

FELICIA (Spalding-Guillory) 26", M, 5 1/2" peach pink, green throat, EV	20.00
FIRE MIST (Guidry) 32", E, 7" rose red, green throat. EV.....	15.00
FOOLISH FANCY (Spalding) 19", E, 6 3/4" cream pink blend, green throat, EV.....	5.00
*GATO (Durio) 28", EMRe, 5 1/2" bright red self, green throat, SEV	30.00
GLORY IN RUFFLES (Guidry) 21", EM, 7" ruffled cream pink, green throat, EV.....	15.00
GRACEFUL EYE (Spalding) 21", E, 6 1/2" lavender, purple eye, green throat, EV.....	20.00
JEWELITE (Pierce) 24", MRe, 6 1/2" pink self, green throat, SEV.....	30.00
JOHN CARLO (Spalding) 16", E, 6 1/2" yellow green, green throat, EV.....	6.00
JOHNE RAYBURN (Tanner) 27", EM, 6" red self, yellow-green throat, SEV.....	5.00
JOLLY LAD (Spalding) 17", EM, apricot, orange halo, green throat, EV.....	25.00
JUDE (Spalding) 17", M, 5 1/2" ivory pink blend, green throat, EV.....	15.00
JUSTIN MARTINEZ (Spalding) 18", M, 5" lemon yellow self, green throat, EV.....	8.00
KEENO (Spalding) 24", EM, 6" ruffled yellow, green throat, EV.....	10.00
LACY BONNET (Spalding) 15", M, 6" ivory, green throat. SEV.....	15.00
LAVENDER TONIC (Spalding) 17", M, 5 1/4" lavender blend, green throat, EV.....	15.00
LOUIS MEMORIAL (Guidry) 20", EERe, 5 1/2" purple blend, green throat, EV.....	10.00
LULLABY BABY (Spalding) 19", EM, 3 1/2" light pink, green throat, SEV.....	5.00
MARTHA ADAMS (Spalding) 19", EM, 6 3/4" pink self, green throat, EV.....	35.00
MUMBO JUMBO (Guidry) 21", E, 6 1/2" rose, deeper halo, SEV.....	10.00
MY CHILDREN (Monette) 20", EM, 6" lavender pink, green throat, EV.....	5.00
MY EYE ELSIE (Gleber) E, 5 1/2" peachy pink, raspberry eye, green throat.....	30.00
NAGASAKI (Kirchhoff) 19", EMRe, 4 1/2", ivory, pink blend, (double).....	10.00
PEACH HORIZON (Spalding) 18", M, 5 1/2" peach blend, green throat, EV.....	15.00
*PEDRO (Durio) 25", EMRe, 5" cherry red, yellow throat, DOR.....	10.00
PEPPERMINT LADY (Guidry) 20", EM, 6" lavender, green throat, EV.....	15.00
PICASSO (Crochet) 24", 5 1/2" pink, darker eye, green throat, DOR.....	35.00
PINK PIONEER (Guidry) 20", M, 6 1/2" rose pink blend, green throat, SEV.....	10.00
PURPLE RAIN (Chesnik) 15", EMRe, 3" purple, black eyezone,	15.00
PURPLE ROMANCE (Spalding) 13", M, 5 1/2" purple, darker halo. green throat.....	10.00
RADIANT EYE (E. Brown) 25", EM, 5" yellow, red eye, green throat, SEV.....	30.00
REALITY (Spalding) 20", EM, 5 3/4" greenish yellow, green throat, EV.....	10.00
ROCKING CRADLE (Spalding) 11", M, 3" lavender blend, green throat, EV.....	5.00
ROSE FRILLY DILLY (Gleber) 26", ERe, 5 1/2" rose, green throat, EV.....	35.00
RUFFLED ORIGINAL (Spalding) 16", M, 6" yellow self, green throat, EV.....	30.00
SANDALETT (Spalding) 19", E, 5 1/2" pink, green throat, EV.....	10.00
SCAPE STOPPER (Spalding) 24", EM, 6 1/2" cream blend, green throat, SEV.....	5.00
*SEDUCTRESS (Gates) 18", EMRe, 5 1/2" beige lavender, edged darker.....	15.00
SENT FROM HEAVEN (Spalding) 18", EM, 6" light pink, green throat, EV.....	5.00
SILENT MORNING (Spalding) 24", EM, 5 1/2" flesh pink, green throat, EV.....	5.00
SINCERE (Spalding) 17", M, 6" ivory blend, green throat, EV.....	30.00
SONYA DENISE (Gleber) 20", E, 6 1/2" light rose, green throat, EV.....	25.00
SOOTHING TOUCH (Spalding) 15", M, 5 1/2" near-white self, green throat, EV.....	5.00
SPRINGTIME SONATO (Spalding) 21", EM, 6" yellow self, green throat, SEV.....	5.00
SUPER DOUBLE DELIGHT (McFarland) 30", M, 7 1/2" yellow, green throat, EV.....	10.00
TALL MAIDEN (Spalding) 25", M, 6 1/2" ivory white self, green throat, EV.....	5.00
TOBIE GENE (Durio) 26", EMRe, 5" shell pink, darker edges, green throat, EV.....	5.00
TONIA GAY (Spalding-Guillory) 15", M, 5 1/2" pink, green throat, EV.....	15.00
TROPICAL DOLL (Guidry) 20", M, 6" cream pink green throat, EV.....	8.00
WILL RETURN (Spalding) 18", M, 4 1/2" peach, purple halo, green throat, EV.....	20.00
YELLOW FEVER (Spalding) 19", ER,e 6" yellow self, EV.....	4.00
YELLOW KITTEN (Spalding) 17", EM, 5 3/4" yellow self, green throat, EV.....	5.00

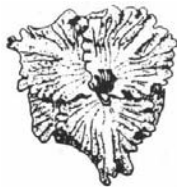


BEAR CREEK FARMS

17011 N. BEAR CREEK DR.
HOUSTON, TEXAS 77084
(713) 463-B114

APPLE ANNIE.....	\$ 5.00	LESSA DAWN.....	\$ 3.00
ART EXHIBIT	3.00	LITTLE DEEKE	10.00
ATTRIBUTION	7.00	LOUISE LATHAM	10.00
BARRAS MEMORIAL.....	5.00	LUCKY GIRL.....	5.00
BEAUKISS	5.00	MAC THE GREAT.....	7.00
BLESSED ASSURANCE.....	5.00	MAE GRAHAM.....	5.00
BLOND RINGLETS	5.00	MAVIS POWELL.....	10.00
BRUTUS.....	5.00	MUSIC BOX.....	3.00
CAVALIERS GOLD	5.00	MY KEEPER	7.00
CHERRY CAPRI	3.00	OLIVE BAILEY LANGDON	5.00
DWARF KING	3.00	ONO.....	5.00
FRIVOLOUS FRILLS	3.00	ORANGE TEX.....	3.00
FULL HARVEST MOON.....	5.00	PETITE MISS.....	5.00
GLORY IN RUFFLES.....	20.00	PINK PASHA.....	5.00
HARRY BARRAS	5.00	PRINCESS KAIULANI	25.00
HAZEL MONETTE	10.00	ROBBIE SALTER.....	25.00
HUBERTA	7.00	SPANISH EYES.....	5.00
INNOCENT BABY	10.00	STARRY EYES.....	10.00
JEAN WOOTEN	7.00	TENDER LOVE.....	5.00
JEROME	15.00	THERESA VALLIEN	3.00
JULIA TANNER.....	3.00	TOOTSIE	25.00
JUMBO RED	5.00	UNEXPECTED PLEASURE	5.00
KING OF GLORY.....	5.00	VIV	5.00
LEPRECHAUNS WEALTH.....	5.00	YASMIN	5.00

Add \$2.00 Postage
Shipped in March Unless Otherwise Indicated
Complete Price List Available on Request



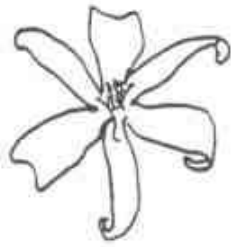
Spring Creek Daylily Garden

Partial Listing from 1987 Catalog

BULLSEYE BABY	\$ 25.00	JANET GAYLE.....	\$ 40.00
CATHERINE NEAL	50.00	LIL LEDIE.....	8.00
DOMINIC.....	30.00	LITTLE BAMBI.....	35.00
DOUBLE APPLE BLOSSOM	25.00	LITTLE DEEKE	8.00
DOUBLE OVERTIME.....	35.00	LITTLE SWEET SUE	8.00
ENON.....	25.00	MERRY MIST.....	30.00
FABULOUS SECRET.....	50.00	MIDNIGHT MAGIC.....	25.00
FLIPPANT REPLY	40.00	MORNING CHEERFULNESS.....	50.00
FRANK GLADNEY	40.00	SEDUCTOR.....	75.00

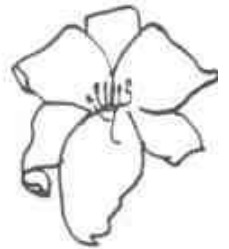
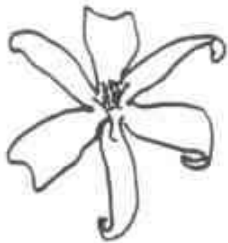
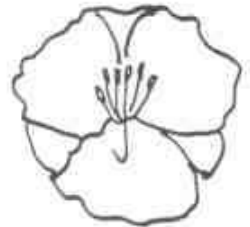
Postage - \$3.50. Texas residents add 5 1/8% sales tax. Full payment with order. No substitutions unless requested. Complete price list - 22¢ stamp.

Eddie & Mary Gage - 25150 Gosling, Spring, Texas 77389, (713) 351-8827



The Seed

*A tiny seed popped open wide,
A small green leaf came from inside
And said "I think I'll go above and see
What is up there that's meant for me?"
So he pushed and pulled and worked his way
To the top of the ground and light of day,
And then he saw to his surprise
Big trees and rocks and bright blue skies.*



*"Oh, I'm too small for this big place,"
He said and tried to hide his face,
And then he heard the Master say
"I have a place for you today,
Grow big and strong and use the power
I've given you to be a flower?"*



*So, with the rain and sun God sent,
The seed with courage grew, content
That all his life was in God's hand
Although he didn't understand.
He grew, his mission to fulfill
To beautify and do God's will.*



*What'er our tasks God only asks
We do His will, our place to fill,
And every hour He gives us power
To rise above the trials we face.
We have His love and promise, too,
The same as all the flowers do.*



Nancy Wood



*What genes a little seed can hold,
you'll never know until you watch
the flower unfold.*