



# **Somerset Group Newsletter**



**25<sup>th</sup> Anniversary Year!**

Number 60

January 2018

# Contents

Chairman's Letter	3
New Members	5
Subscriptions for 2018	6
Somerset Group 'On Tour'	7
2018 Programme	8
The Raffle at Lecture Meetings	15
Cerne Abbas	15
Longstock Park Water Gardens	16
Sir Harold Hillier Gardens	17
Wanted! Helpers at Group Meetings	18
Plant Sales Table	19
Flower and Pot Plant of the Month Competition	19
Committee	20

<https://somersethps.com/>

Cover photograph – *Cypripedium sp.* at Burrow Farm Gardens, May 2017, Stuart Senior

## Chairman's Letter

It's a cold, misty, wet November Monday but I'm still buzzing from the AGM last Saturday. We had hoped that it would be a bit special so that we could fairly claim it as a fitting contribution to the Society's 60th anniversary celebrations. By general assent we certainly succeeded. I have never seen the hall so full nor sensed such a buzz. We had record numbers of visitors, and several came from neighbouring groups, Devon and Dorset.



Our guest speaker, Helen Dillon, was clearly a great attraction, and I heard a good deal of admiration for her contribution and her robust attitude to change and moving on. Whether or not the buffet was just as much of an attraction, it was certainly taken up with alacrity with not a lot left to clear away. Helpers had to fight their way into the room to uncover the food to start serving! Some of the visitors were tempted by the offer that their £5.00 could be used as a subscription to join the group for next year – so we also got some new members out of it as well. Thank you all – the 'home team' – for turning up in strong numbers and most particularly for all those who helped in so many ways.

Looking outside, the combination of very strong winds a couple of weeks ago and persistent, sometimes driving rain has made the garden look a bit sorry for itself, but there are still things of interest that sit well within the russet shades of the beech hedges and the changing foliage of deciduous trees. This year I have been particularly pleased with the performance of some of the perennial (though tender) impatiens. *I. kilimanjari* x *pseudoviola*, a pink so pale it is nearly white (top). *I. kilimanjari* subsp *kilimanjari* a gorgeous red with yellow markings on the petals (second down), somewhat sparing in flower, but a tiny delight. More 'in your face' is *I. kilimanjari* 'Candy Pink' (third down).

Then there is the unique, blue *I. namcharbarwensis* (opposite) which can be a bit tricky to keep. You really need to rely on it seeding in situ at the end of the summer and then spotting the small number of seedlings that emerge in spring, grab them and pot them up and grow on under cover to plant out in June.



A bit of a palaver but well worth it for such a lovely and unusual plant and mercifully they don't seem to mind being dug up at this early stage of their growth. Totally different in structure is *I. sodenii* var *ugandense* (left) with its large white flowers with claret blotches at the centre. This plant can make two to two and a half feet in each direction in a season and always attracts attention.

Not all *impatiens* are as desirable as

these however, and I'm not talking about just the dreaded Himalayan Balsam. The tuberous types, (e.g. *rothii*) should come with a health warning. If left to their own devices the tubers become very large in dense clusters and bury themselves very deep. They then make large (though quite attractive) plants that swamp all around them and are very difficult to get rid of. The tubers in the picture were dug out from 2 feet down and it took 3 years to be entirely rid of them. We didn't try cooking them!



Another welcome autumn gem needing quite different conditions is *Serratula tinctoria* var. *seoanei*, a member of the asteraceae family (it used to be known far more simply as *S. shawii* when I first acquired it and I still have to look up its clumsy re-classified name!). It flowers very late – not before the end of October - is very compact, growing only to about 9 to 15 inches, has tough, dark green divided foliage, topped with fluffy heads of lilac/purple flowers. It needs a position in full sun on well-drained soil and could make a good rockery plant, though in maturity it just might be slightly over-size in that position. When it reaches that size however it is time to lift and divide it and pass it on for others to grow so that it becomes far better known. It is an unassuming and charming little plant.

Turning to our Committee, I am very pleased to welcome Maralyn Norman and Caroline Reeves as new members. I have said on several occasions that we have been running short of a couple of members for a matter of years and it puts an unfair strain on those that are on the Committee. So it is great news that we now have some new blood. I very much look forward to their contribution. We have also said in the past that there are always jobs that can be done outside the Committee and on page 17 Jane has set out some examples with the hope that it may encourage a few people to come forward with offers of help.

Looking ahead to 2018, we have another programme for you that we hope will prove attractive, and we shall be busy in January preparing for a new season of plant fairs. All places at E. Lambrook and Hestercombe are fully booked and the list is open for our own Group plant sale at West Monkton, so if you are interested in taking a table

do please contact me while it is still fresh on your mind. A table costs only £5, unless you are giving all the proceeds to charity. Your table is then free. If you prefer to donate plants for the Group table that is fine. Please try and get your plants to the hall by about 9.30. All the usual requests for good, well-grown, properly labelled plants, distributing flyers and help on the day will follow, with announcements at our meetings. The Group seems to be on a bit of a roll at the moment, so please do all you can to keep it that way. The AGM showed very clearly what enthusiasm there is around. Thank you for that support, please keep it up.

**Roy Stickland**

## New Members

I'd like to welcome the following hardy planters to the Somerset Group:

Marion Spear, Yeovil  
Karen Sutton, Seavington  
Jenny Shukman, Langport  
Kay Williamson, Compton Dundon  
Jennifer Bower, Pen Selwood  
Angela Whinfield, Bourton  
Nigel & Vivienne Wood, Exeter  
Karen Rowe, North Newton  
Judith Chapman & BJ Lewis, Kilmington  
John & Pauline Saunders, Somerton  
Edward Goddard, Chard  
Alison Lemmey, Corscombe  
Diana Hebditch, Lillesdon  
Katie Clarke, Tickenham  
Carole McFadyean, North Curry  
Joan Salter, Weston-super-Mare  
Michèle Osborne, Minehead  
John & Melanie Horsey, Combe St. Nicholas  
Kate Fox, Taunton  
Corinne Mead, Wellington  
Geraldine Hills, Lymphsham  
Hugh Balchin, Bristol

## Subscriptions for 2018

A reminder that subscriptions for 2018 fall due this month. The rates remain £8 for joint (i.e. a single mailing address) and £5 for single membership. Thank you to those who paid at the AGM and to those who pay by standing order. For those who prefer to pay by cheque, the usual payment slip is included with this Newsletter. I shall be at the January lecture if you would like to save the cost of an envelope and stamp.

**NB In order to be a member of our Somerset Group you must be a member of the National Hardy Plant Society. I will not be able to accept your Somerset subscription without a National membership number. National subscriptions can now be paid very easily via the National website at <http://www.hardy-plant.org.uk/> using PayPal.**

Alternatively, for paying Somerset Group subscriptions, those of you who are adept at internet banking may set up a standing order or do a BACS transfer direct to our bank account:

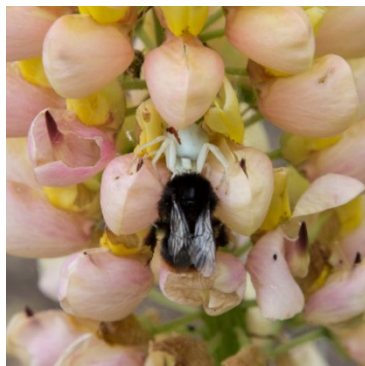
Bank Branch:	NatWest, Bridgwater
Account name:	Hardy Plant Society (Somerset Group)
Sort Code:	60-03-27
Account number:	46429956

**Please remember to quote your Somerset Group membership number (it's on your membership card and on the Newsletter envelope ..... which you have probably just shredded or recycled!).**

Under the terms of the Data Protection Act 1998 it is necessary that I advise you that, for the purposes of record only, details relating to your membership are stored electronically. If you object to your details being so recorded, please notify me without delay.

### **Stuart Senior**

*Right – a cautionary tale. A white crab spider (Misumena vatia) hiding in a lupin flower and successfully trapping, and devouring, a bee. Take care sniffing flowers: one never nose!*



## Somerset Group "On Tour"

In his piece for the AGM papers, Roy has already alluded to the appearances made by the Group at a number of horticultural events during 2017 but I should like to add my thanks to the many members who came forward to help on our stall. Roy and I oversaw all of these events but without the help of the members it would have been very burdensome for us. Many hands do indeed make light work! We hope that everyone who took part enjoyed themselves too whilst they provided valuable publicity for the Group and helped to sign up a number of new members, as well as sell a few plants.

No doubt we will be repeating this venture again in 2018 (if we receive the invitations!) so please come forward to offer your services when asked. You aren't expected to be a plant expert in any way, just enthusiastic about the HPS and to be prepared to talk to visitors to the stall about what we do and what you get from your membership of the Society and the Group. In return for your one or two hours on our stall you will be at liberty to wander around the event for free.

We also need to have plants to sell at all of these events so please get propagating and bring them along on the day or to a preceding event. We don't charge our members for entrance to lecture meetings so please think about bringing a plant as your entrance fee.



**Jane Hunt**

## 2018 Programme

Please refer to this and future Newsletters or the website [www.somersetgps.com](http://www.somersetgps.com) for further details and booking slips. Location maps or directions will be supplied following booking a place on an event.

All meetings at West Monkton Village Hall are free to members (except Saturday 28 April), but there is a modest levy of £2 for each visitor/guest (£5 on 23 June). The Group will have a plant stall and a book stall at most of the lecture meetings listed, plus the 'Plant and Flower of the Month' competition.

All coach trips and garden visits must be pre-booked with Janet Murley:

Tel: 01884 820840 or email: [janet.murley@btinternet.com](mailto:janet.murley@btinternet.com).

### **SAT 13 JANUARY**

### **LECTURE**

*At West Monkton Village Hall, Monkton Heathfield, 10:30am for 11:00am.*

#### **Sue Applegate - "Making the most of Peonies and Irises"**

A renowned expert on irises and peonies, Sue grows them commercially at her nursery, Hurst Brook Plants, near Crewkerne. Her garden houses a National Collection of 21 intermediate bearded irises, originating from the Langport Collection bred in the 1970s by the former manager of Kelways, John Lloyd. Discover how to get the best out of peonies and irises and bring some sumptuous colour into your garden in May.

### **SAT 10 FEBRUARY**

### **LECTURE**

*At West Monkton Village Hall, Monkton Heathfield, 10.30am for 11.00am.*

#### **Claire Greenslade - "Hestercombe - Restoration of the Edwardian and Victorian Garden"**

Claire is the Head Gardener at Hestercombe, which combines the landscape garden originally created in 1750 by Coplestone Warre Bampfylde with the early 20th century formal gardens designed by Edwin Lutyens and Gertrude Jekyll. Claire will be talking about the challenges of restoring a heritage garden, including the difficulties in maintaining colour in a garden that was originally only designed for summer, as well as tracking down the original plants outlined in Jekyll's design.



**SAT 10 MARCH**

**LECTURE**

*At West Monkton Village Hall, Monkton Heathfield, 10.30am for 11.00am.*

**Brian Hiley - "Container Plants and Something Different"**

Brian has been growing tender and unusual plants for over 30 years at his nursery, Trevena Cross Nurseries, near Helston in Cornwall. He is a member of the RHS Tender Ornamental Plant Committee and a RHS Gold Medal winner. In this talk he will be inspiring us to plant our pots and troughs with flower and foliage combinations that will turn heads!

**SAT 24 MARCH**

**HPS SOMERSET EARLY SPRING PLANT FAIR**

*At East Lambrook Manor Gardens, 10:00am – 4:00pm.*

*(Admission £3.50)*



The following nurseries will be attending: Avon Bulbs, Blooming Hill Plants, CB Plants, Desert to Jungle, Dorset Perennials, Elworthy Cottage Plants, Gardener's Delight Nursery, Hardy Way Plants, Hill Top Nursery, In Clover, Kevin Hughes Plants, Long Acre Plants, Mill Cottage Plants, Millwood Plants, Pennard Plants, Phoenix Perennial Plants, Picket Lane Nursery, Roseland House Nursery, Shady Plants and Wild Thyme Nursery. The Margery Fish Plant Nursery will be open.

**SAT 14 APRIL**

**LECTURE**

*At West Monkton Village Hall, Monkton Heathfield, 10.30am for 11.00am.*

### **Timothy Walker - "Two for The Price Of One"**

The former director of the University of Oxford Botanic Garden & Harcourt Arboretum, Timothy Walker is a lively and engaging speaker. His talks are always amusing and informative. This talk is particularly useful for those of us with small gardens which demand maximum impact and value from the plants grown in them, as it features plants whose characteristics give us two or more reasons to grow them. Flowers and fruit is an obvious combination but scent, foliage and autumn colour also count. A useful and entertaining lecture.

**SAT 28 APRIL**

**GROUP PLANT SALE**

*At West Monkton Village Hall, Monkton Heathfield, 10:00am to 12:30pm.*

**(Admission £1)**

**WED 2 MAY**

**COACH TRIP**

### **The Lost Gardens of Heligan**

### **St. Austell, Cornwall**



Twenty-five years ago, Heligan's historic gardens were unknown and unseen, lost under a tangle of weeds. It was only the chance discovery of a door in the ruins that led to the unveiling of this once great estate. Painstakingly restored, The Lost Gardens now take pride of place among the finest gardens in Cornwall. Highlights include giant statues which appear to arch out of the ground itself, a 100ft rope

bridge which sways above large-leafed ferns and tropical jungle plants, and Europe's only pineapple pit (used to grow pineapples for The Queen). The wider estate encompasses ancient pastures and the woodland, ponds and lakes of the Lost Valley, from where a walk leads down to the harbour at Mevagissey.

**WED 16 MAY**

**SELF-DRIVE VISIT**

**Watcombe (the garden of members Peter & Ann Owen) Winscombe**

A ¾-acre, mature Edwardian garden with colour-themed, informally planted herbaceous borders. A strong framework separates several different areas of the garden: a pergola supports a varied collection of wisteria, there is unusual topiary, a lime walk, pleached hornbeams, cordon fruit trees and a diverse collection of over 80 types of clematis. A peaceful and beautiful place to wander.

**WED 20 JUNE**

**COACH TRIP**

**Iford Manor**

Harold Peto's creation at Iford is a dream of a garden. Italianate in style and romantic in character, it combines beautiful garden buildings with broad walks, statues and pools, all set amid cypresses, wisteria and naturalised martagon lilies. The steep hillside affords the visitor breath-taking views of the valley. In addition, we will visit the private family garden during the day'.

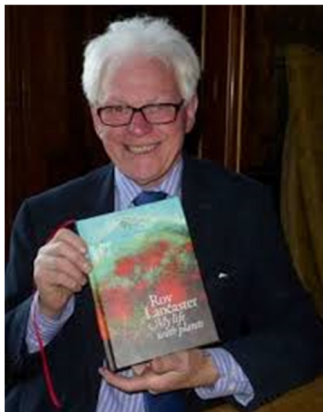


*Photos © Martin Moyes*

**SAT 23 JUNE**

**25<sup>th</sup> ANNIVERSARY LECTURE**

*At West Monkton Village Hall, Monkton Heathfield, 14:30 for 15:00 talk followed by refreshments.*



### **Roy Lancaster - "My Life with Plants"**

To celebrate the 25th anniversary year of the Somerset HPS Group, world-famous plantsman and President of the HPS Roy Lancaster will be coming to speak. This talk commemorates the publication of his autobiography, 'My Life with Plants', a very personal book which takes us through the life of this Lancashire lad who became a renowned horticulturist. With lively anecdotes from his early days in horticulture and stirring tales of plant-hunting in exotic places, don't miss the opportunity to attend a lecture by this legend of the gardening world.

*Members no charge, guests £5.*

**SUN 8 JULY**

**HPS SOMERSET SUMMER PLANT FAIR**

*At Hestercombe Gardens, 10:00am – 4:00pm.*

*(Admission £5.00)*

Our first Summer Plant Fair at Hestercombe, and what a wonderful occasion it promises to be. Diverse specialist nurseries will be gathering to offer visitors the best of their plants in high summer. Hestercombe's own nursery will be open, and refreshments will be available at The Stables Cafe. *(Plant Fair visitors will be entitled to a £5 reduction on the garden entrance fee.)*

**TUE 17 JULY**

**COACH TRIP**

### **Waterperry Gardens**

**Oxford**

Waterperry Gardens was home to a renowned horticultural college between 1932 and 1971. Over the past twenty years the gardens have developed and grown, and many new projects have been undertaken and completed, including the Formal Garden, the Mary Rose Garden, a Waterlily Canal and the Long Colour Border. Beautiful trees, shrubs and flowers, secret corners and long vistas make this a garden well worth visiting.

**SUN 12 AUGUST**

**PLANT SWAP & LUNCH**

*At Smeatharpe, Honiton*

**SAT 15 SEPTEMBER**

**50/50 PLANT SALE & LECTURE**

*At West Monkton Village Hall, Monkton Heathfield*

Plant sale commences at 10:00am, Lecture at 11.00am.

**Julian Sutton - "How the Flowers Became"**



Many of you will be familiar with Julian who, with his wife Sarah, runs Desirable Plants, a mail-order nursery based in Totnes. In this lecture, Julian will be looking at the nature of flowers, their form, colour and even their biological behaviour. The lecture includes a series of fascinating stories surrounding the evolution of floral diversity, including the origin of flowers themselves, all illustrated by garden-worthy plants.

**WED 19 SEPTEMBER**

**SELF-DRIVE VISIT**

**Midney Gardens**

**Somerton**

The garden at Midney was started in 2009, with the aim of creating a place which people would want to visit and enjoy. Nine years on, the garden offers visitors a chance to experience a plantsman's garden of exceptional quality. Subtle themes and a natural planting style draw the visitor from one garden area to the next and each area has its own character. The onsite nursery specialises in herbaceous plants, alpines, grasses and herbs – all organically grown. Refreshments available in the tearoom.



**SAT 20 OCTOBER**

**LECTURE**

*At West Monkton Village Hall, Monkton Heathfield, 10.30am for 11.00am.*

**Dr. Laura de Beden - "Create a garden as a work of Art"**

Laura is a landscape architect and garden designer whose talks are always well received and interesting. In this design masterclass, she will be discussing spatial composition, ideas and materials, demonstrated by simple yet effective practical examples. Discover how the rich language of art applies to garden-making and how to relate this to your own plot. This talk could change how you view your garden!

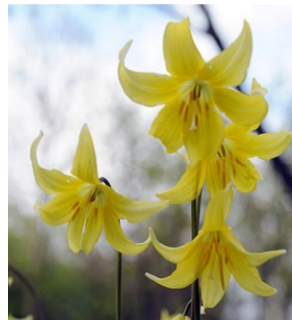
**SAT 17 NOVEMBER**

**AGM & LECTURE**

*At West Monkton Village Hall, Monkton Heathfield, 10.00am for 10.30am AGM and 11.30am lecture.*

**Keith Wiley - "Erythroniums and other Woodlanders"**

Anyone who has heard Keith speak or visited his garden, Wildside, will know what a treat this lecture will be. An erythronium fanatic, he has raised and named several hybrids of his own. As well as erythroniums he will be discussing the many other woodland plants that he adds to the mix, and showing how observations gathered from seeing plants in the wild helps him to provide the conditions they need. Even if you don't have an acre of woodland, most of us have an area under trees in our gardens where these plants can grow.



**All events must be pre-booked**

If you would like to book places on any of these events, complete and return the entire enclosed Booking Sheet. As you will see from the Booking Sheet, you can receive the Joining Instructions for each event either by email or by post. To receive these details by email, simply fill in your email address on the Booking Sheet **even if you believe I already have a note of it**. If you choose this option, not only will I email your Joining Instructions prior to each event, but I will also send you an email confirming your booking. If you prefer this option **PLEASE** print your name clearly and remember to advise me of any change to your email address. Should you wish to receive this information by post, **PLEASE** remember to send me **TWO** SAE for **EACH** event you wish to attend.

**Janet Murley**

## The Raffle at Lecture Meetings

Maralyn Norman has kindly volunteered to take over the running of the raffle before our monthly lecture meetings. However, she requires our help. In order to have prizes which will encourage everyone to buy lots of tickets Maralyn will need to source some attractive items. If you are able to donate something that would make a nice raffle prize please would you bring it along to a meeting. If there are more than, say, five or six items donated, Maralyn will keep some back until the next meeting.

Funds raised by the raffle help us to continue to provide an attractive programme for members of the Group at our current low subscription level.

Thanks for your help.

***Jane Hunt***

## Cerne Abbas



On Sunday June 18<sup>th</sup> 2017 a depleted but enthusiastic group of the Somerset Group sallied forth to Cerne Abbas in a spacious 51-seater coach. In just over an hour we arrived, collected maps, had lunch and planned our route round 34 gardens to be visited between 2 and 6pm. No pressure then, on one of the hottest June days so far.

The variety of gardens was impressive ranging from water and wildflower meadows, the latter being described as stunningly beautiful - full of colour. The village itself lent

a real insight into the way the old original medieval garden plots had evolved into meandering paths. In some cases these seemed never ending, to become oases behind fascinating overhung timbered cottages down the main Abbey street ending in a view of the Abbey house near the water mill leat.

A bird's eye view from the church tower would have revealed how the gardens had become part of the intricate map where some inhabitants had accessed parts of neighbours' gardens and made sense of the little alleyways and slip paths we had to use to enter. The roses were in profusion and there were little pockets of woodland calm where one could reflect and admire the background of the church tower and the hills behind and beyond.

Further out a few later buildings reflected differing styles from Georgian to modern day design with differing needs and tastes. Of course, there was also an impressive and reasonably priced plant stall from a Dorchester nursery, some of which found themselves on the coach later!

Comments overheard such as 'delightful', 'interesting village,' 'well organised' and 'friendly people who were very proud of their gardens' were proof of a lovely day.

**Janet Murley** (photo Stuart Senior)

## Longstock Park Water Gardens

A more pleasant, warm day for wandering round a stunning area of beautifully maintained water gardens which initially took our collective breath away. A brief but informative introduction from the head gardener, Rob, who then left us to explore. The swathes of colour from moisture-loving plants such as lilies and Astilbies together with trees and shrubs of all types gave a picture of beauty, calm and reflection. Interest in species names kept gardeners busy answering questions and the layout made one want to see what was on the other side of each path and bridge. A few wished to remain in the gardens while some decided to walk back to the Nursery and Restaurant whilst others took the coach.





Afterwards it was judged to be a lovely visit “one of the best” and that, after a prolonged journey home due to an accident on the A303. Most people spoke of the decision to put the gardens into a trust in perpetuity in order to preserve the area as admirable and a garden to be visited again.

**Janet Murley** (photos *Stuart Senior*)

## Sir Harold Hillier Gardens



30+ (very) Hardy Planters set off on a wet day for Sir Harold Hillier Gardens. We were greeted on arrival and informed the grounds extend to 200 acres which our chairman commented gives us 5 minutes per acre.

The site was not originally that large but over the years Sir Harold bought up surrounding fields. There are now 40 National Collections and 100 Champion trees. Sir Harold left the gardens to Hampshire County Council and I think he would be pleased with the current standard of maintenance. It was encouraging to see the children's area and hear that 1500 children visit every year. Stuart disappeared into the trees and was never seen again; well, he did come out to catch the coach home. The Gardens are very proud of their hydrangea collection, though I suspect our very own Sally Gregson, who was with us, might have a better one. It was a treat to see the millennium border, which was perfectly maintained.

There is an enormous winter garden, surely the biggest in the country. There were a few weeds here but they wouldn't be there long as two happy gardeners were busy removing them. They were the only people I saw in the half hour I was around there.

There is an adjoining garden centre, called Hillier's but now an entirely separate organisation. Personally, I found it a bit disappointing but our leader, Janet, did find a *philadelphus* she had been looking for. I wonder if she's planted it yet?

It was a wet day for this excursion but it fortunately managed to stay mostly dry while we were there, except for one heavy shower. Yet another successful outing!

**Penny Berry** (photo Stuart Senior)

## Wanted! Helpers at Group Meetings

I am very pleased to see that we have some new blood on the Somerset Group Committee and would like to welcome them. I hope that they find their tenure as much fun as I do!

However, there are lots of smaller jobs at our regular lecture meeting for which we would appreciate help. One involves putting up the notice board each meeting and making sure it is kept up to date. This could be undertaken by two people which hopefully would ensure that at least one is present and if both are there it makes it easier to get the board set up. Setting out the chairs is now a bigger task given the more comfortable, but weighty, new chairs in the hall.

Another job involves looking after the "Plant of the Month" competition, putting out Post-it® notes for entrants to put their names by their plants and recording the winners each month. We could also do with someone to help the guest speaker get set up, put out the projector stand and ensure that the screen and the microphone are in ready to go!

If you are really looking for a job to get your teeth into and you enjoy propagating plants, the Group still lacks someone to take on the role of Conservation Scheme Co-ordinator. It would be fantastic if we could participate in this venture once again after so many years so please give it serious thought.

If you are able to help with any of these tasks please let Roy, Stuart or me know. I must stress that you are NOT being coerced into joining the Committee by taking on one of these jobs, but you would be performing a vital role in the smooth-running of our monthly meetings.

We look forward to hearing from you so please don't be shy!

**Jane Hunt**

## Plant Sales Table

I'd like to thank everyone who has brought plants to be sold on the Group's sales table last year. For any new members who may be unaware, the plant sales table at our monthly meetings is stocked entirely with plants donated by our members, which may be purchased at a reasonable price prior to and following the meeting. There are often some real gems and rarities available to buy. Given that the traditional sources of free plastic bags has now dried up please bring your own carrier bags or boxes to take away your acquisitions.

I'd be very grateful if you would all consider potting up excess plants from your gardens and bringing a couple of plants each time you come to a Group lecture meeting. And remember that we can now offer "cash back" of 50p for each plant sold at over £1 if members include two labels with their plant. I will assume that plants with two labels (don't forget your name) are seeking cash back and those with one aren't. The monies raised from this table and the second-hand gardening books stall really do help us to continue to provide members with great value for money for their membership.

***Jane Hunt***

## Flower and Pot Plant of the Month Competition

The rules of the competition are as follows. Members are invited to bring a flower and/or a pot plant to each of our seven meetings at West Monkton Village Hall throughout the calendar year. The entries will be judged by our guest speakers and the top three in each section will be awarded points: 3 for 1<sup>st</sup>, 2 for 2<sup>nd</sup> and 1 for 3<sup>rd</sup>. Points will be accumulated during the year and the overall winners will receive gardening vouchers as their prize, plus a cup to retain for the year.

For the flower section the requirement is a single flower (usually displayed in a vase) if that is how the plant grows, e.g. a narcissus or a dahlia. If it is a flowering shrub, for example with clusters of flowers along the stem, then it is the whole stem that you display. The point is that it is not a flower arranging exhibit, so multiple blooms or stems are not what we are looking for. If you are an Ikebana fiend then you'll know, of course, that even a single bloom may be displayed very artistically!

For the pot plant section much the same rule applies. The requirement is for a single plant in a pot. For a plant that naturally produces little offsets all around the central growth, as many succulents do, you do not have to remove all the offsets!

# Committee

Chairman:  
Roy Stickland  
01934 843280  
herongates@hotmail.com

Herongates, Horseleaze Lane  
Shipham  
WINSCOMBE  
BS25 1UQ

Secretary:  
Jane Hunt  
01934 732441  
hunt.frogshole1@btinternet.com

Frogs Hole Farm  
Brinscombe, Weare  
AXBRIDGE  
BS26 2LH

Treasurer, Membership Secretary  
& Newsletter Editor:  
Stuart Senior  
01823 442344  
stuart\_senior@msn.com

Court Barton, Bull Street  
Creech St Michael  
TAUNTON  
TA3 5PW

Speakers:  
Ruth Boundy  
01823 668678  
rubyfield@btinternet.com

5 Greenway Road  
Rockwell Green  
WELLINGTON  
TA21 9DE

Visits etc:  
Sandra Macqueen  
01934 843363  
sandra@enamelsandra.co.uk

105 The Lynch  
WINSCOMBE  
BS25 1AR

Visits etc:  
Janet Murley  
01884 820840  
janet.murley@btinternet.com

Marigold Cottage  
Whitnage  
TIVERTON  
EX16 7DT

Maralyn Norman  
01823 975899  
beaconview@yahoo.co.uk

Buckwell House  
Buckwell  
WELLINGTON  
TA21 8TE

Caroline Reeves  
01963 351269  
carolineofcc@gmail.com

Colt Cottage  
Clanville  
CASTLE CARY  
BA7 7PQ